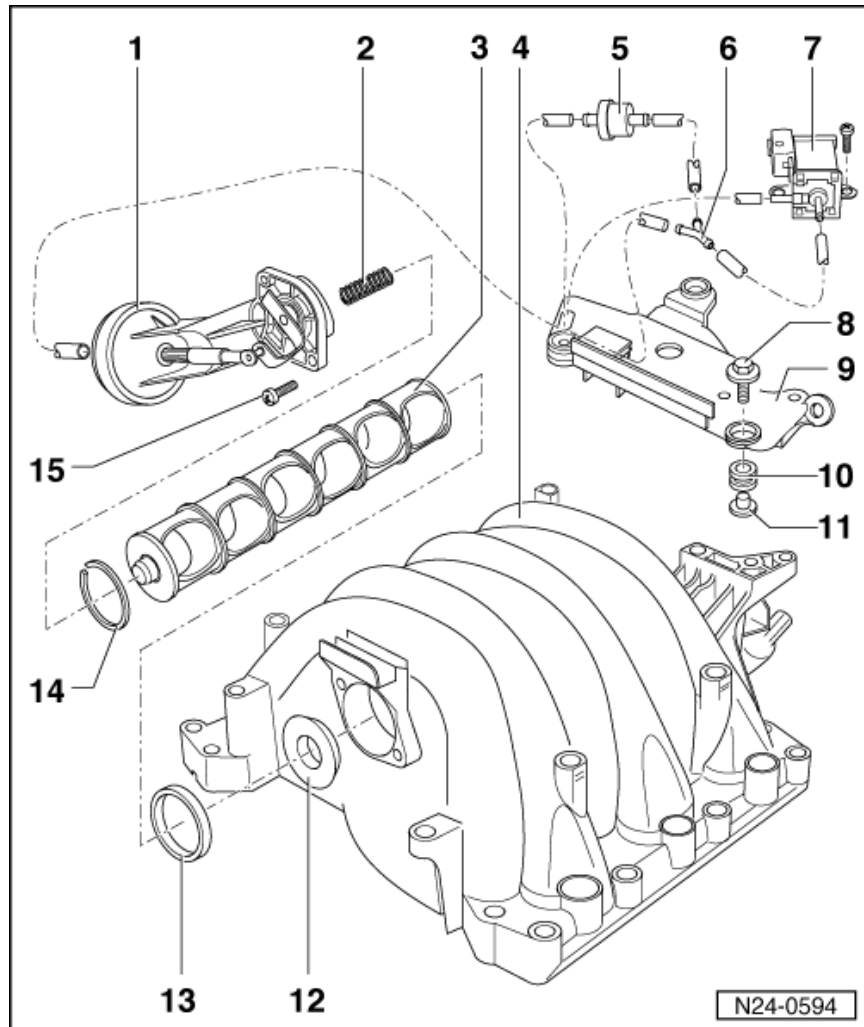


A6 V6 Vacuum Lines

Servicing Motronic injection system

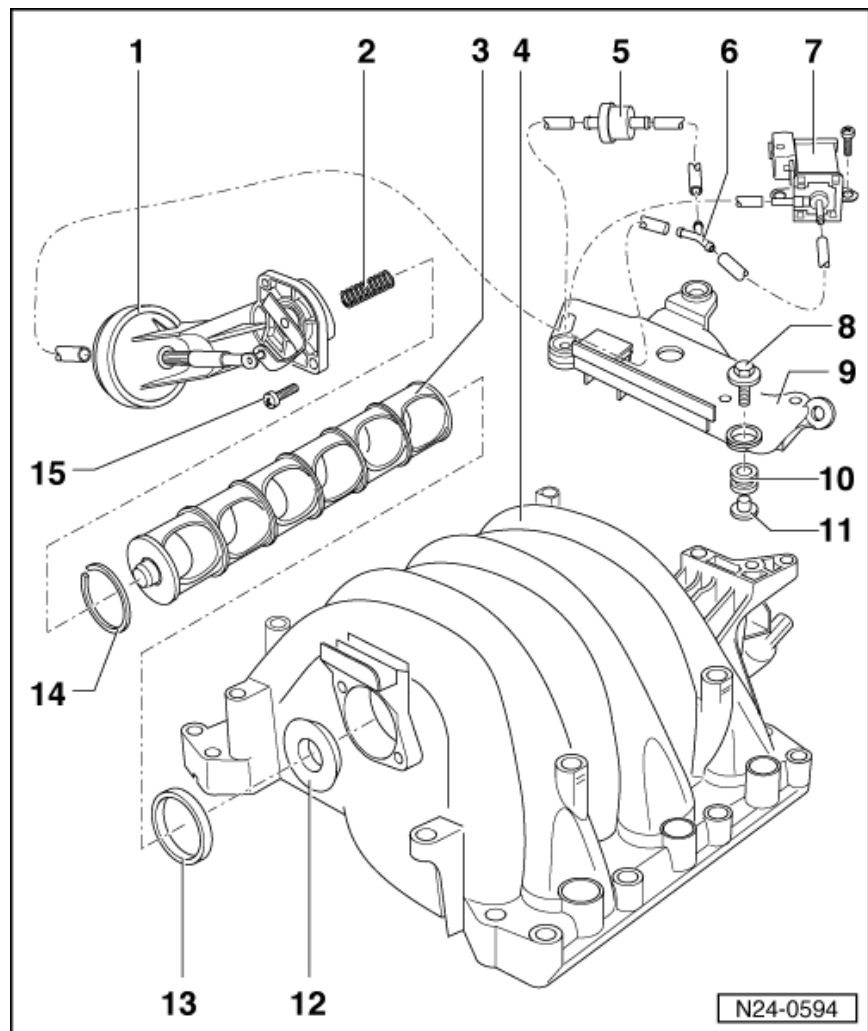
Removing and installing parts of intake manifold change-over

- Vacuum unit
- Spring
- Change-over barrel
- Intake manifold
- Non-return valve
 - Installation position: Blue end to Y-piece
- Y piece
- Intake manifold change-over valve -N156



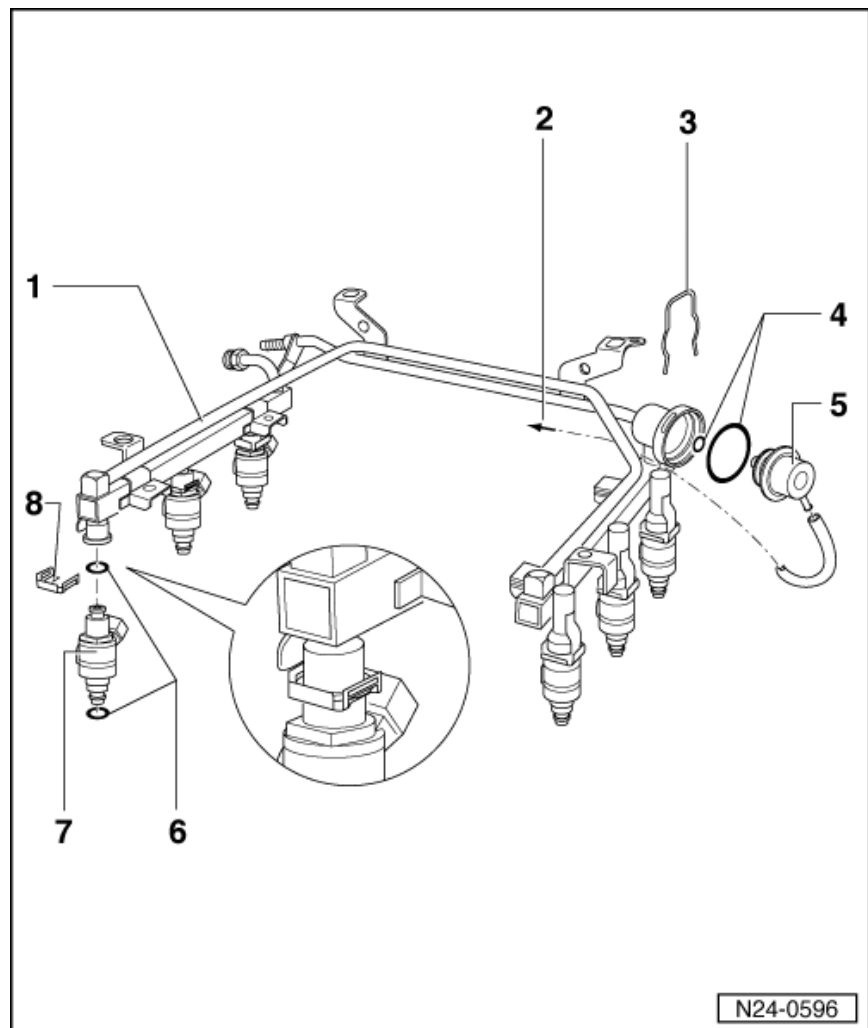
- 10 Nm
- Securing plate
- Rubber grommet
- Spacer sleeve
- Washer
 - Conical side to intake manifold
- Seal
 - Renew if damaged
- Seal
 - For change-over barrel

- 6 Nm



Servicing Motronic injection system
Dismantling and assembling fuel rail with injectors

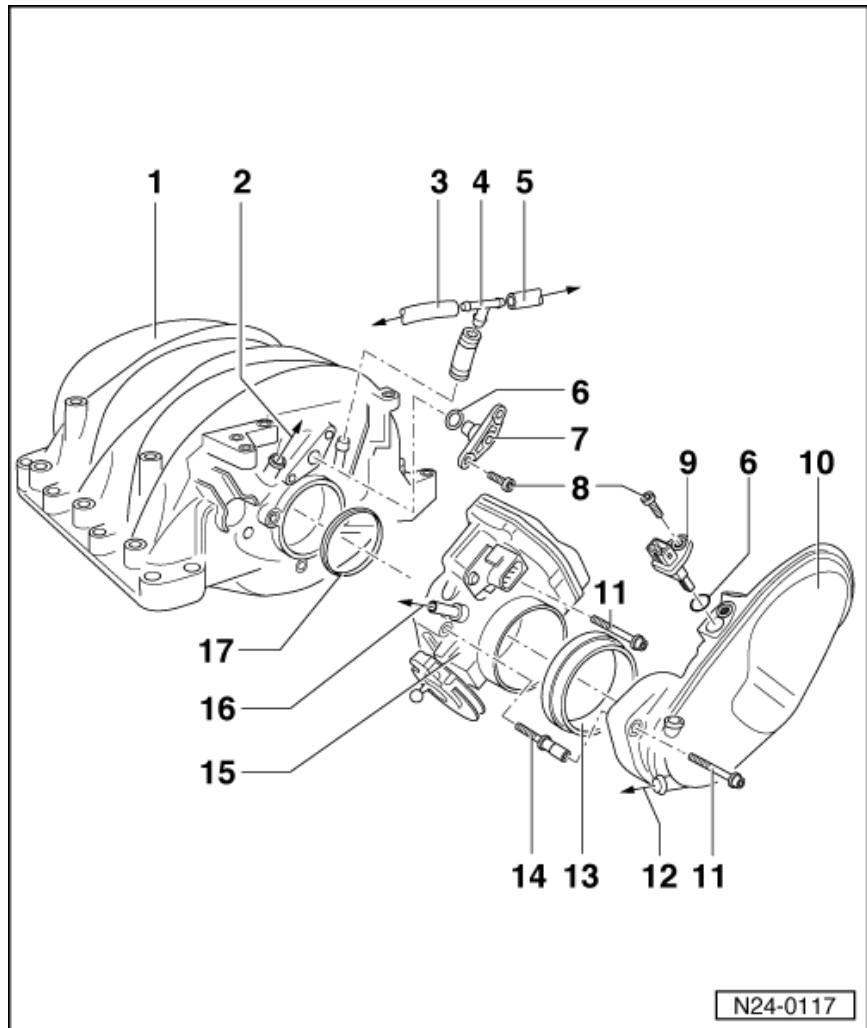
- Fuel rail
- To T piece
- Retaining clip
- O ring
 - Renew
- Fuel pressure regulator
- O ring
 - Renew
- Injector -N30...-
N33, -N83, -N84
- Retaining clip
 - Ensure clip is seated correctly at injector and fuel rail



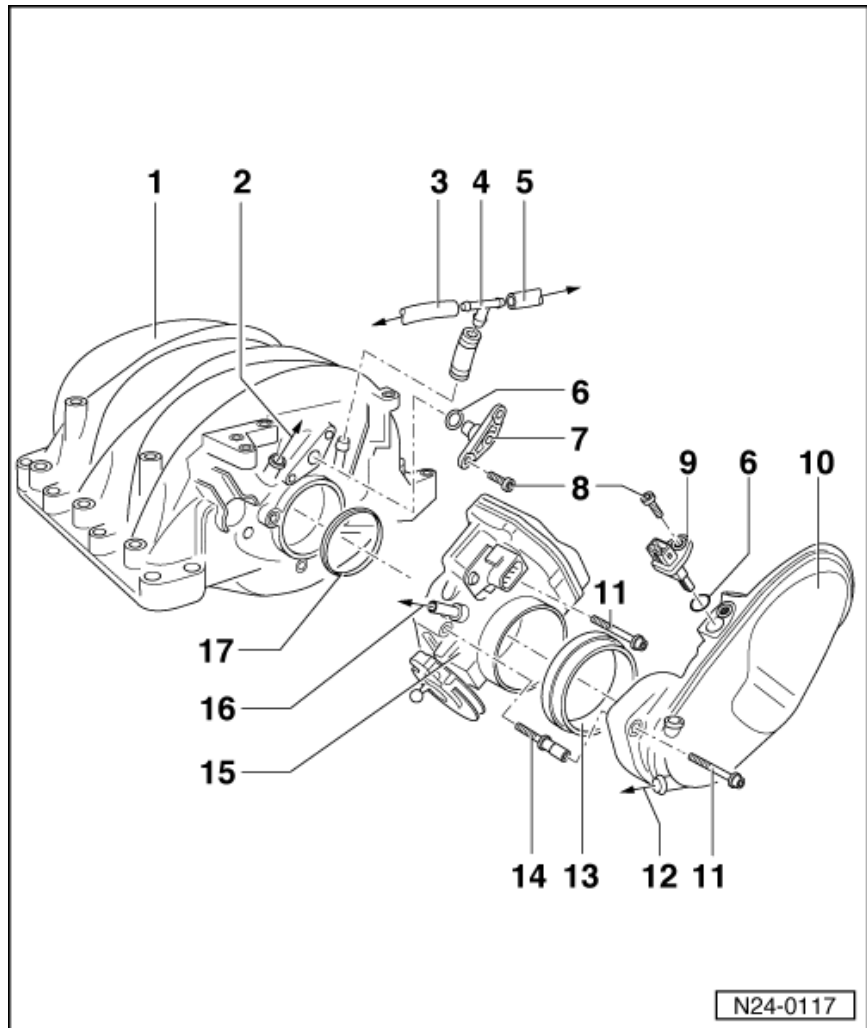
I provide this from the mechanical throttle body version of your car as it shows the vacuum pipes

Servicing Motronic injection system
 Removing and installing throttle valve control part

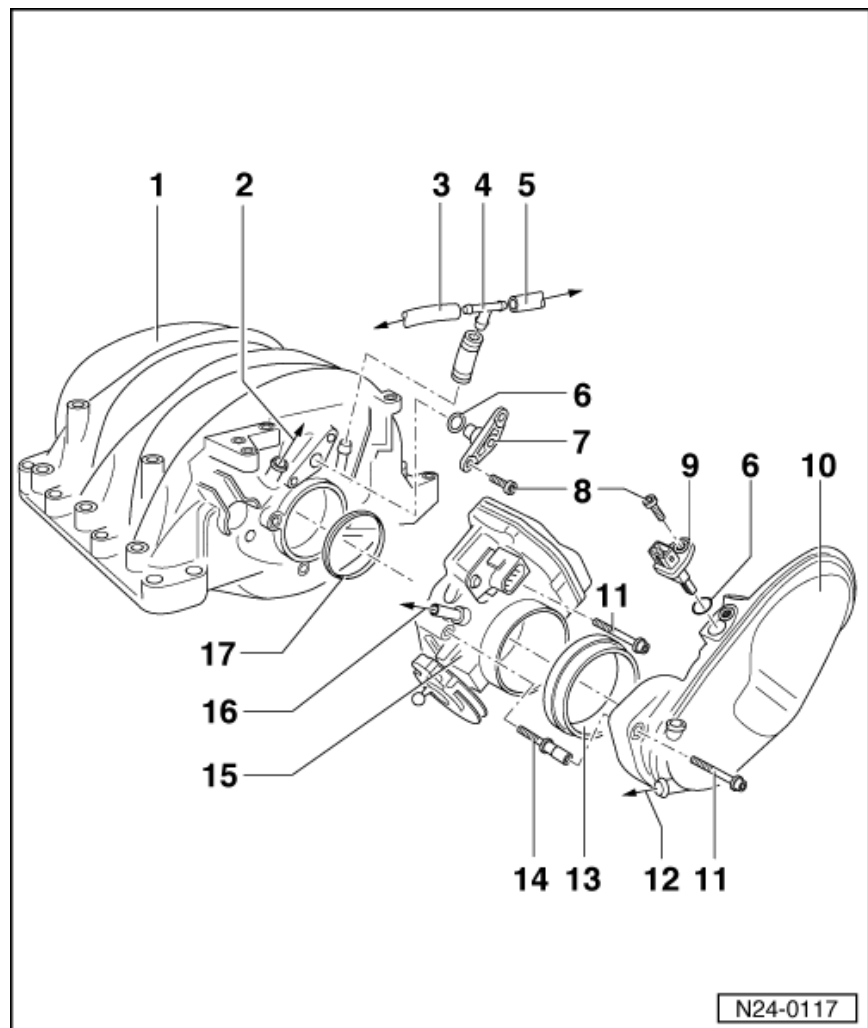
- Intake manifold
- To suction jet pump
- To fuel pressure regulator
 - =>Page [24-16](#), Item [5](#)
- T-piece
 - =>Page [24-18](#), Item [5](#)
- O ring
 - Renew if damaged
- Support bracket
 - For change-over drum
- 6 Nm



- Intake air temperature sender (G42)
- Air intake elbow
- 10 Nm
- To crankcase breather valve
- Oil seal
- 10 Nm
 - Insert with locking fluid "D6"
- Throttle valve control part (J338)

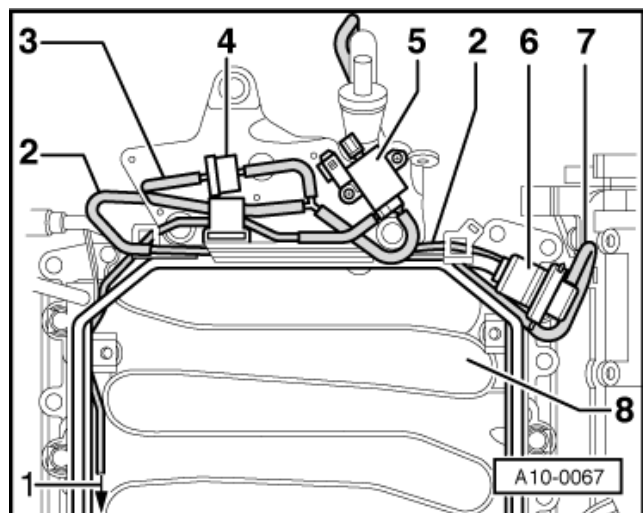


- To solenoid valve 1 for activated charcoal filter (N80)
- Oil seal
 - Renew if damaged



→ Fig. 1 Vacuum connections seen from above

- 1 - To vacuum actuator for intake manifold change-over
- 2 - To vacuum reservoir in left-hand wheel housing
- 3 - To T-piece on intake manifold
- 4 - Non-return valve
- 5 - Intake manifold change-over valve
- 6 - Fuel pressure regulator
- 7 - To T-piece on intake manifold
- 8 - Intake manifold



→ Fig. 2 Vacuum connections seen from behind

- 1 - Fuel pressure regulator
- 2 - To crankcase breather valve
- 3 - Suction jet pump
- 4 - T-piece
- 5 - Non-return valve
- 6 - To vacuum reservoir in left-hand wheel housing
- 7 - Air intake elbow
- 8 - Crankcase breather valve

