

Rear Center Console

1 - Rear Center Console

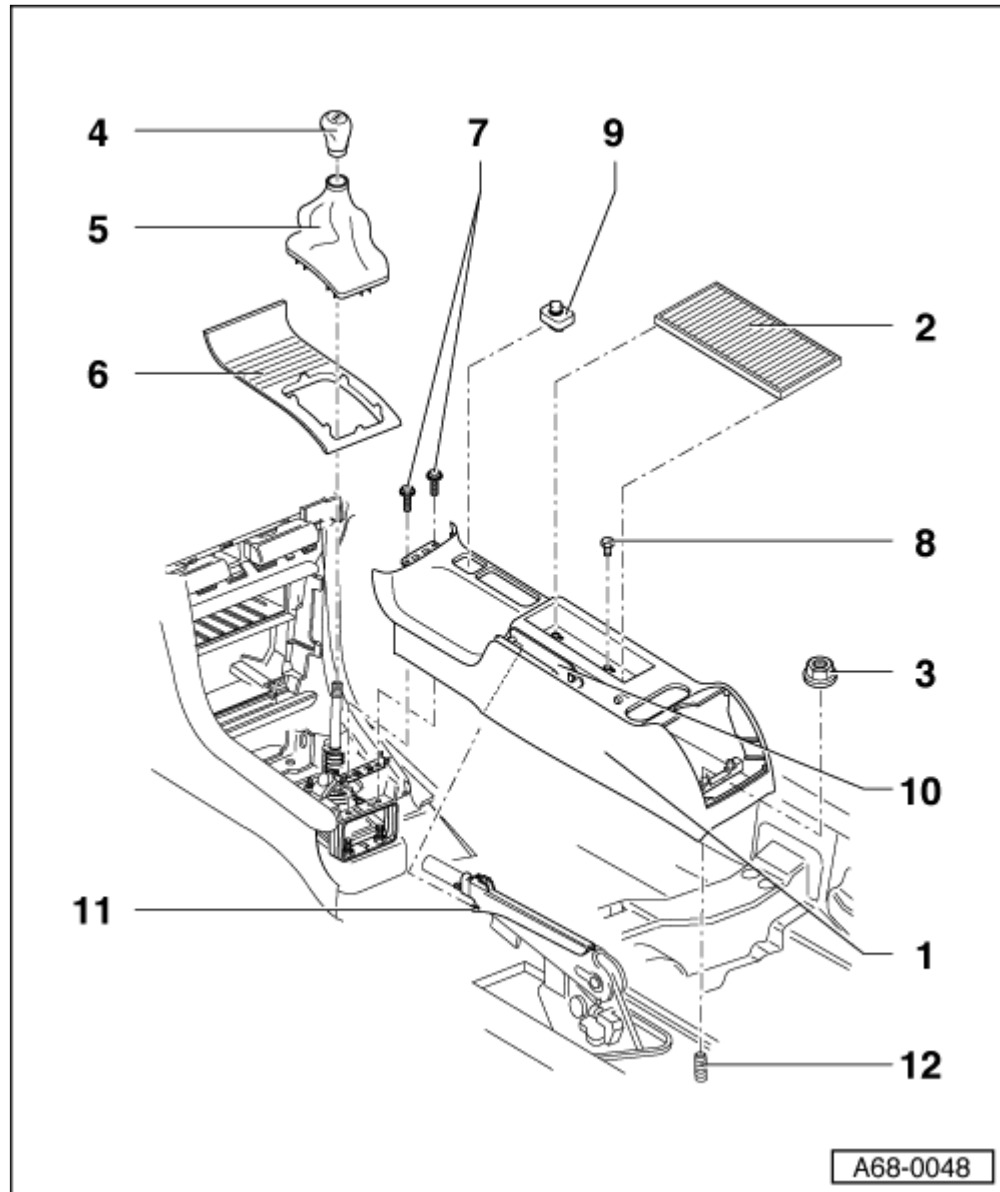
- Removing
 - Remove the rear vent and rear air duct connecting piece. Refer to → [Chapter „Rear Vent and Rear Air Duct Connection“](#)
 - Remove the center armrest as needed. Refer to → [Chapter „Center Armrest“](#)
 - Remove nut -3-.
 - Lift up and remove the lining mat -2-.
 - Remove bolts -8-.

With manual transmission:

- Remove the shifter knob -4-.
- Unclip the gear lever gaiter -5- in an upward direction.
- Unclip the insert of the center console -6- in an upward direction.
- Removing and installing the shifter knob -4- and gear lever gaiter -5- from MY 2002. Refer to → [Chapter „Selector Lever Boot and Shifter Knob, from MY 2002“](#)

With automatic transmission:

- Unclip the insert of the center console -6- in an upward direction.
- Remove bolts -7- (Qty. 2).
- Remove the parking brake trim. Refer to → [Chapter „Parking Brake Trim“](#)
- Lift up the rear center console -1- toward the front and disconnect the connector for the mirror adjustment switch -9-
- Fully engage the parking brake lever.
- Remove the rocker cover -10- from the retaining tab -11- of the parking brake lever.
- Lift the rear center console -1- over the studs -12- and pull the center console backward.
- Remove the rear center console -1- forward over the parking brake lever.
- Installation
 - Attach the rocker cover -10- to the retaining tab -11- of the parking brake lever.
 - When installing the rear center console -1-, ensure that the air ducts are correctly seated.



2 - Lining Mat

3 - Nut

- Tightening specification: 10 Nm.

4 - Shifter Knob

- Screwed on.
- Removing and installing from MY 2002. Refer to → [Chapter „Selector Lever Boot and Shifter Knob, from MY 2002“](#)

5 - Gear Lever Gaiter

- Unclip in an upward direction.

- During installation, check the position of the locking clips.
- Removing and installing from MY 2002. Refer to → [Chapter „Selector Lever Boot and Shifter Knob, from MY 2002“](#)

6 - Center Console Insert**7 - Screws (Qty. 2)**

- Tightening specification 5 Nm.

8 - Bolt (Qty. 1)

- Tightening specification 5 Nm.

9 - Mirror Adjustment Switch**10 - Parking Brake Lever Rocker Cover****11 - Retaining Tab****12 - Studs**