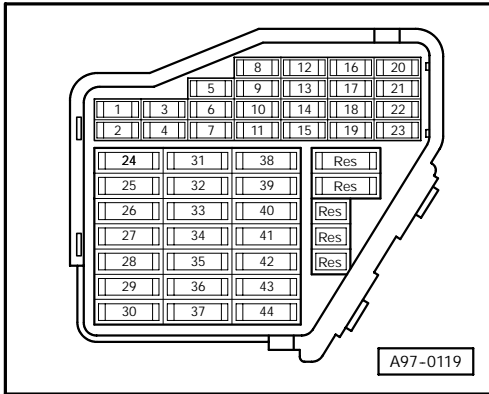


Headlight with High Intensity Gas discharge Lamps and automatic dynamic Headlight Beam Adjusting

2001 m. y.

Fuse Panel

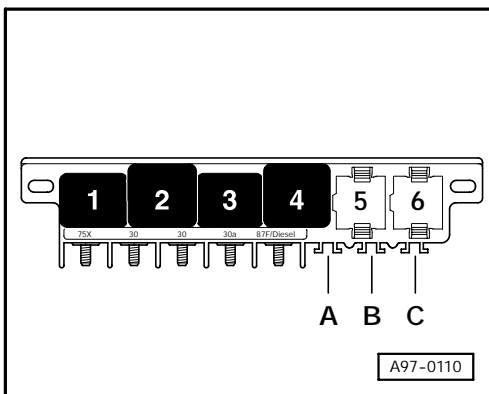


Fuse Colors:

- 30 A - Green
- 25 A - White
- 20 A - Yellow
- 15 A - Blue
- 10 A - Red
- 7,5 A - Brown
- 5 A - Beige

Starting with fuse position 23, fuses in the fuse holder are identified with 223 in the wiring diagram.

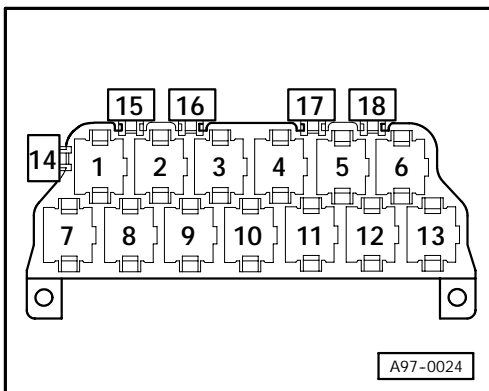
Micro Central Electric Panel



Relay Location:

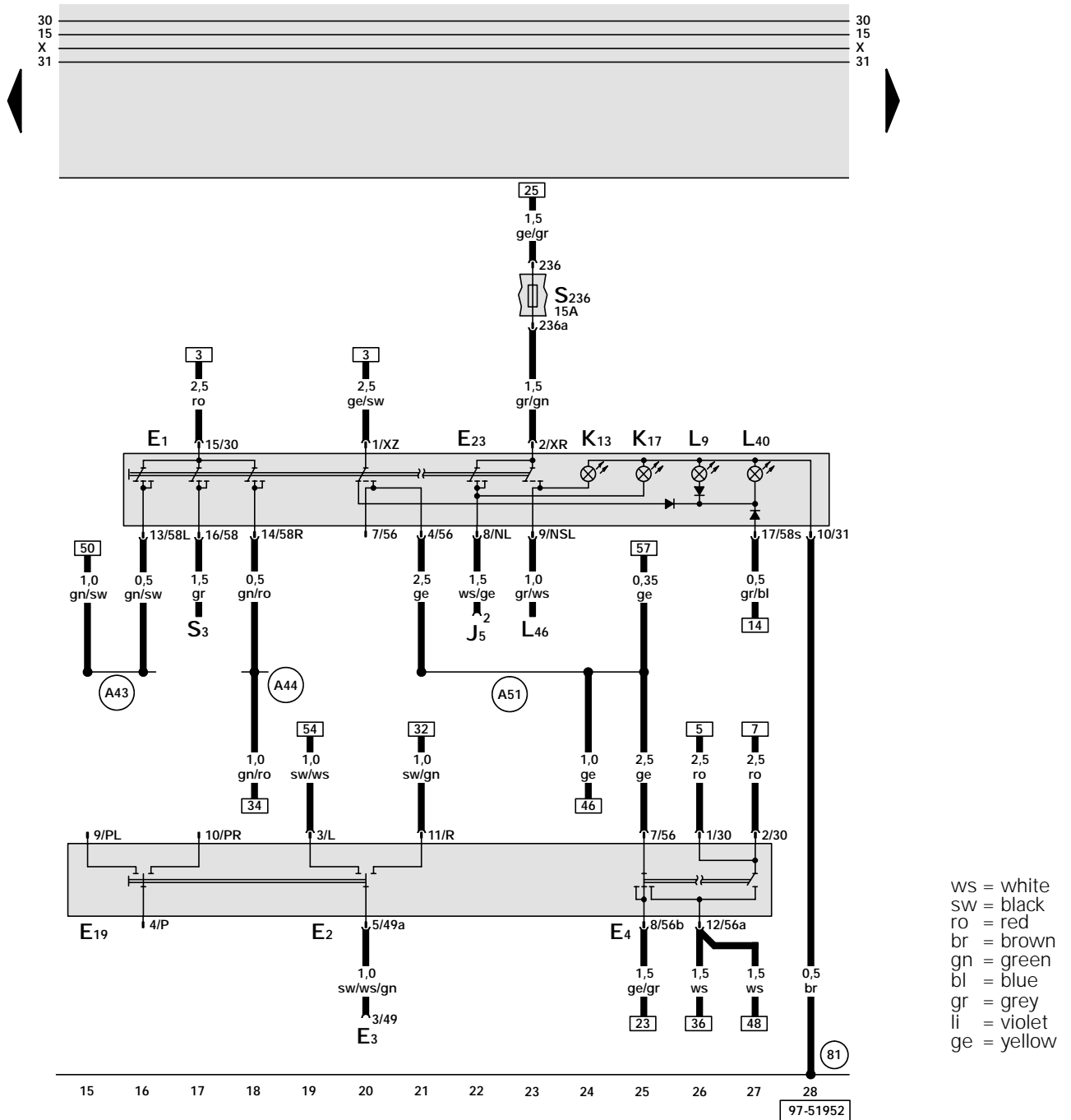
- 2** -Load Reduction Relay, J59

13 - Fold Relay Panel



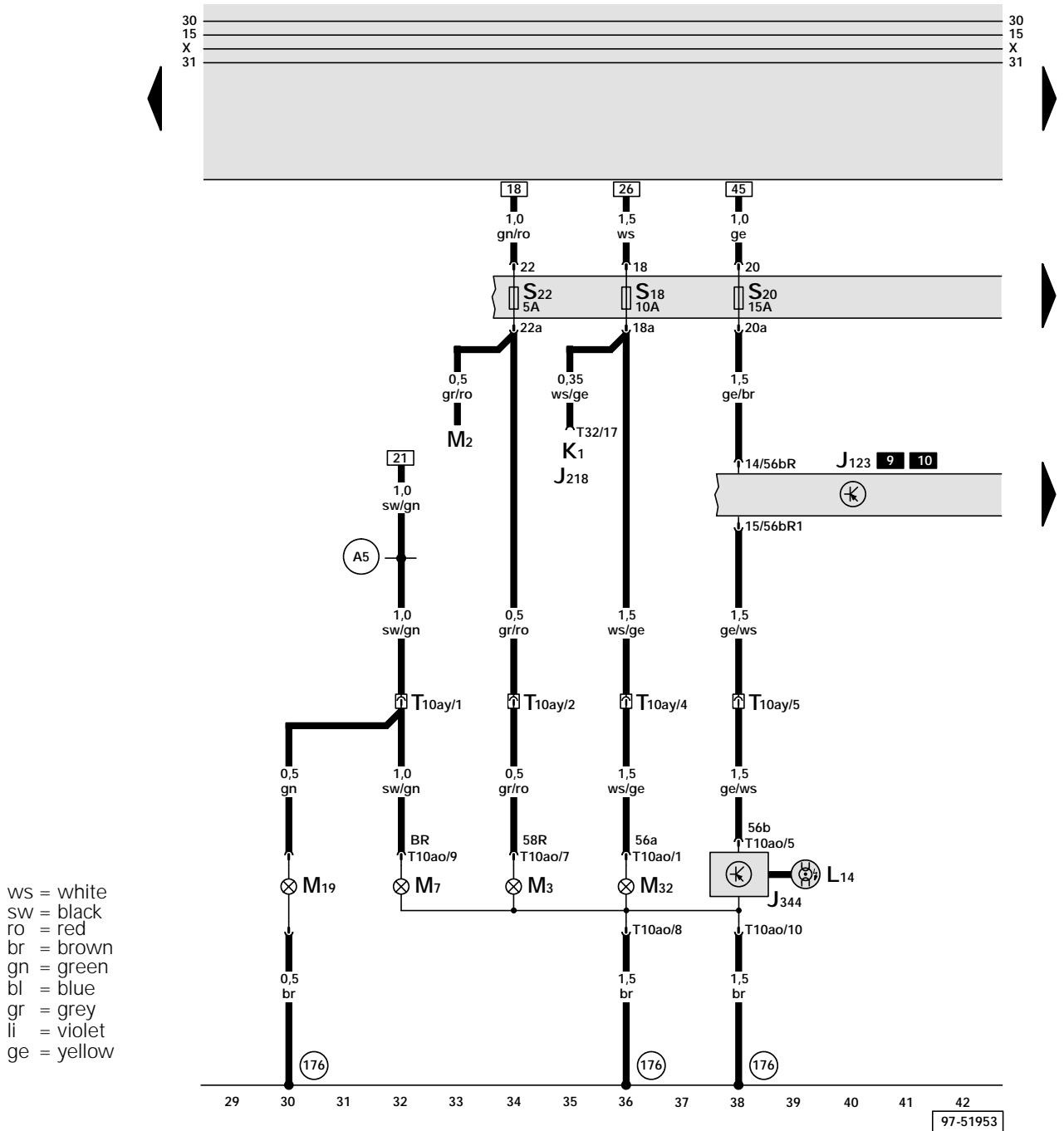
Relay Location:

- 9** -Lamp Control Module, J123
- 10** -Lamp Control Module, J123



- E1 - Light switch
- E2 - Turn Signal Switch
- E3 - Emergency Flasher Switch
- E4 - Headlight Dimmer/Flasher Switch
- E19 - Park Light Switch
- E23 - Fog Light Switch
- J5 - Fog Light Relay
- K13 - Rear Fog Light Indicator Light
- K17 - Fog Light Indicator Light
- L9 - Headlight Switch Light
- L40 - Front And Rear Fog Light Switch Light
- L46 - Left Rear Fog Light
- S3 - Fuse
- S236 - Fuse 36 in fuse holder

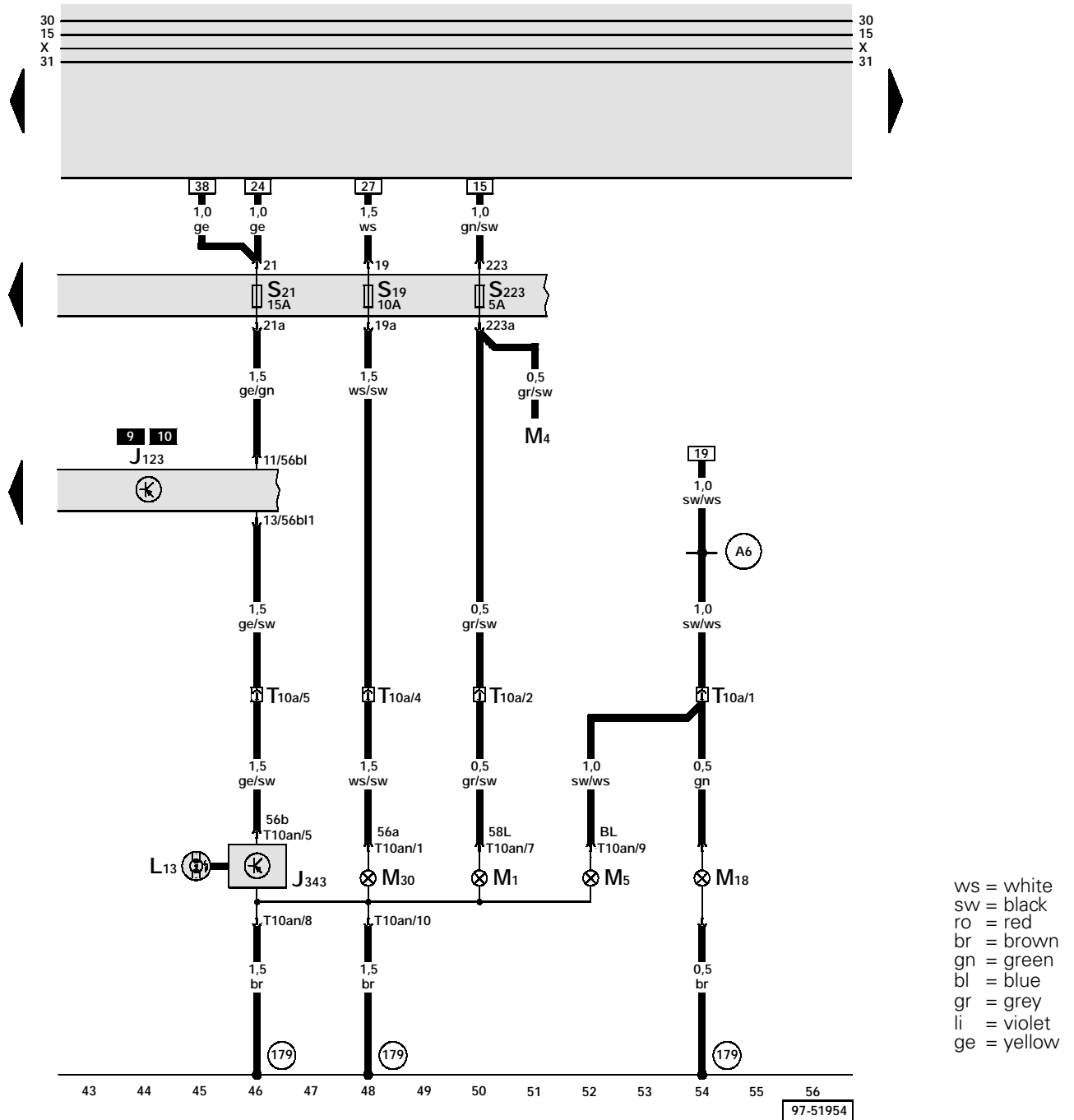
- (81) - Ground connection -1-, in instrument panel wiring harness
- (A43) - Wire connection (57l), in instrument panel wiring harness
- (A44) - Wire connection (57r), in instrument panel wiring harness
- (A51) - Wire connection (56), in instrument panel wiring harness



ws = white
 sw = black
 ro = red
 br = brown
 gn = green
 bl = blue
 gr = grey
 li = violet
 ge = yellow

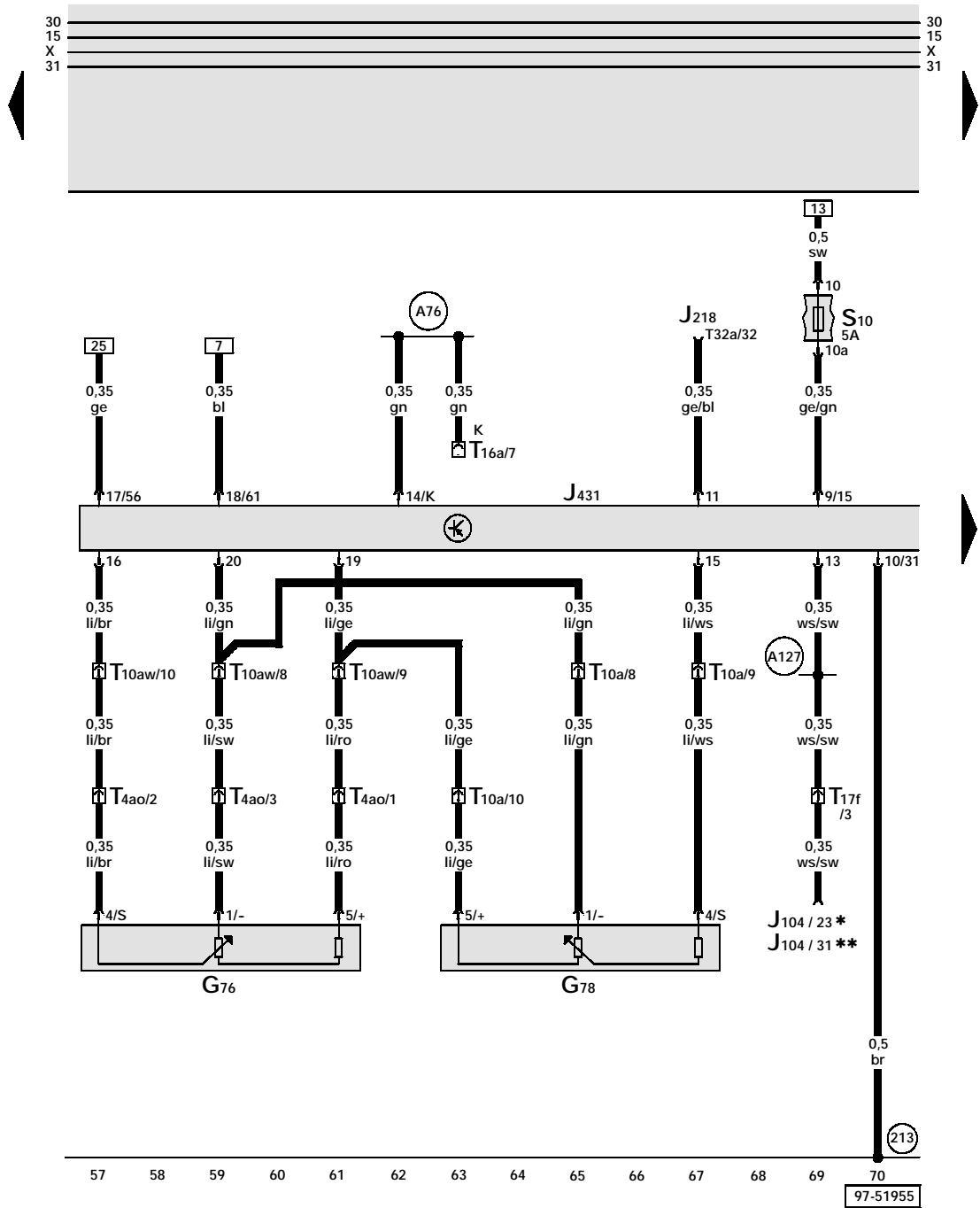
- J123 - Lamp Control Module
- J218 - Instrument Cluster Combination Processor
- J344 - Control Module for High-intensity gas discharge lamp
- K1 - Headlight High Beam Indicator Light
- L14 - High intensity gas discharge lamp right
- M2 - Right Tail Light
- M3 - Right Parking Light
- M7 - Right Front Turn Signal Light
- M19 - Right, Side Turn Signal Light
- M32 - Right High Beam Headlight
- S18 - Fuse
- S20 - Fuse
- S22 - Fuse
- T10ao - Connector 10 pin, on headlight, right
- T10ay - Connector 10 pin, pink, connector station A pillar, right
- T32 - Connector 32 pin, blue, on instrument cluster

- (176) - Ground connection, in right headlight wiring harness
- (A5) - Plus connection (right turn signal), in instrument panel wiring harness



- J123 - Lamp Control Module
- J343 - Control Module for High-intensity gas discharge lamp
- L13 - High intensity gas discharge lamp left
- M1 - Left Parking Light
- M4 - Left Tail Light
- M5 - Left Front Turn Signal Light
- M18 - Left, Side Turn Signal Light
- M30 - Left High Beam Headlight
- S19 - Fuse
- S21 - Fuse
- S223 - Fuse 23 in fuse holder
- T10a - Connector 10 pin, pink, connector station A pillar, left
- T10an - Connector 10 pin, on headlight, left

- (179) - Ground connection, in left headlight wiring harness
- (A6) - Plus connection (left turn signal), in instrument panel wiring harness

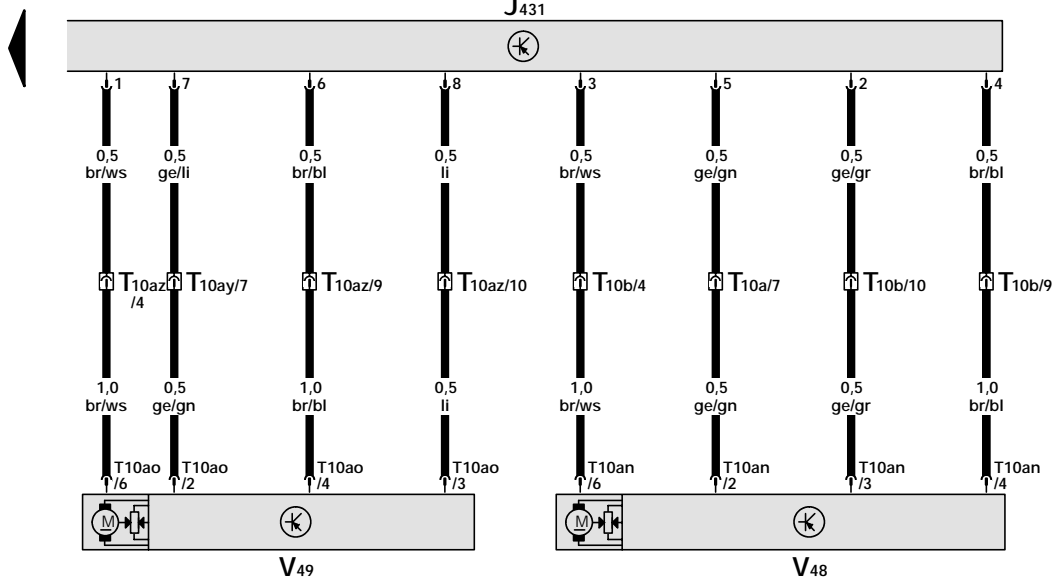
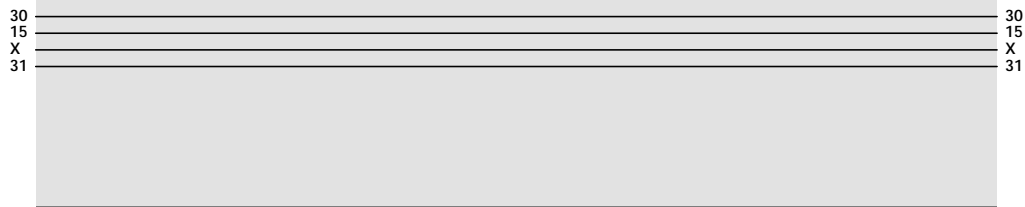


ws = white
 sw = black
 ro = red
 br = brown
 gn = green
 bl = blue
 gr = grey
 li = violet
 ge = yellow

- G76 - Left Rear Level Control System Sensor
- G78 - Left Front Level Control System Sensor
- J104 - ABS Control Module (w/EDL)
- J218 - Instrument Cluster Combination Processor
- J431 - Control module for Headlight Beam Adjusting
- S10 - Fuse
- T4ao - Connector 4 pin, black, below rear seat, left
- T10a - Connector 10 pin, pink, connector station A pillar, left
- T10aw- Connector 10 pin, black, connector station A pillar, right
- T16a - Connector 16 pin, Data Link Connector (DLC)
- T17f - Connector 17 pin, black, in 8-Fold Relay Panel behind the storage driver's side
- T32a - Connector 32 pin, green, on instrument cluster

- (213) - Ground connection, in instrument panel wiring harness
- (A76) - Connector (K-diagnosis wire), in instrument panel wiring harness
- (A127) - Connection (road wheel speed sensor, left rear) in harness for instrument cluster

- * - Vehicles with ABS 5.3
- ** - Vehicles with ABS 5.3 with ESP



ws = white
 sw = black
 ro = red
 br = brown
 gn = green
 bl = blue
 gr = grey
 li = violet
 ge = yellow

71 72 73 74 75 76 77 78 79 80 81 82 83 84
 97-51956

- J431 - Control module for Headlight Beam Adjusting
- T10a - Connector 10 pin, pink, connector station A pillar, left
- T10b - Connector 10 pin, red, connector station A pillar, left
- T10an - Connector 10 pin, on headlight, left
- T10ao - Connector 10 pin, on headlight, right
- T10ay - Connector 10 pin, pink, connector station A pillar, right
- T10az - Connector 10 pin, red, connector station A pillar, right
- V48 - Left Headlight Beam Adjusting Motor
- V49 - Right Headlight Beam Adjusting Motor