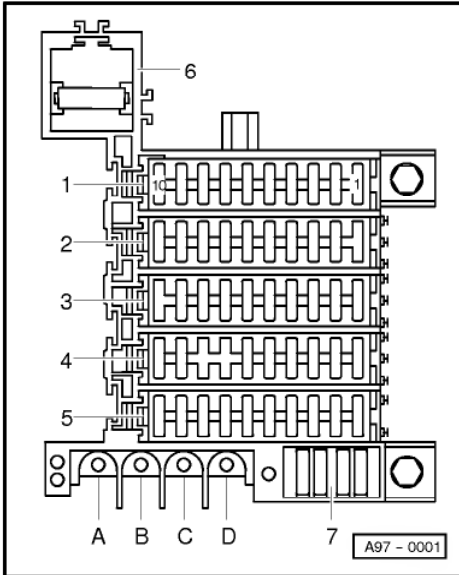


Radio-Bose Symphony with and without CD Changer

2000 m. y.

Fuse Panel

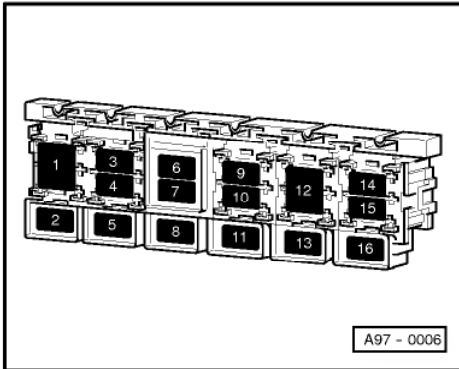


Fuse Colors:

- 30 A - Green
- 25 A - White
- 20 A - Yellow
- 15 A - Blue
- 10 A - Red
- 7,5 A - Brown
- 5 A - Beige

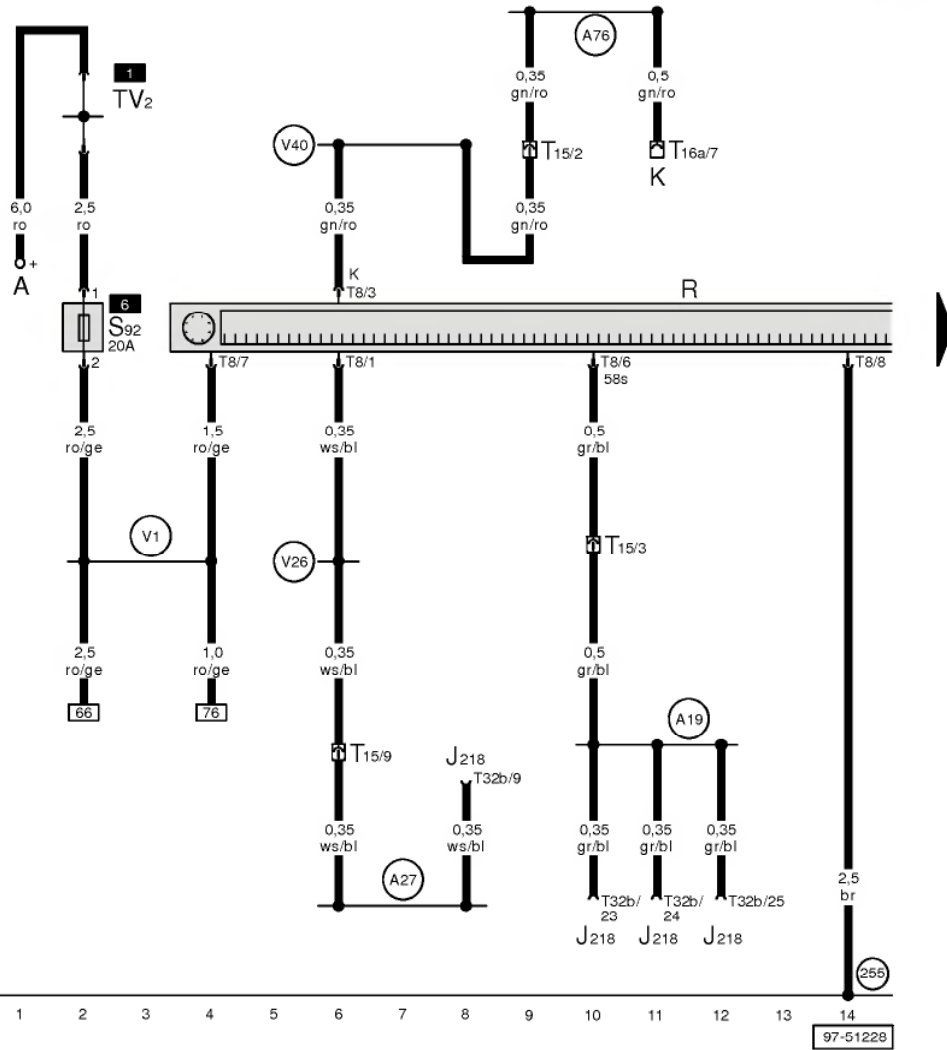
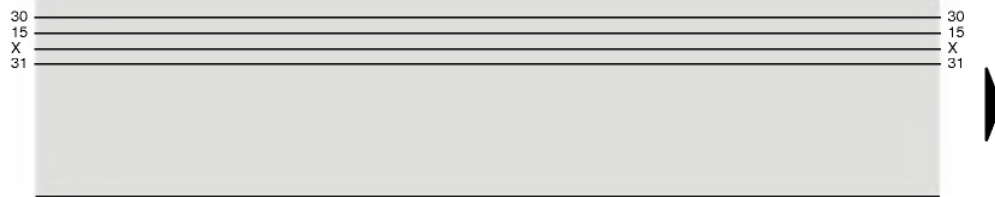
- 1 - Fuse Carrier 1 (ST1), black
- 2 - Fuse Carrier 2 (ST2), red
- 3 - Fuse Carrier 3 (ST3), yellow
- 4 - Fuse Carrier 4 (ST4), blue
- 5 - Fuse Carrier 5 (ST5), brown
- 6 - Coolant Fan Fuse, S42
- 7 - Spare Fuse
- A, B, C, D-Distributor Terminal

Relay and Fuse Panel Luggage boot right



Relay Location:

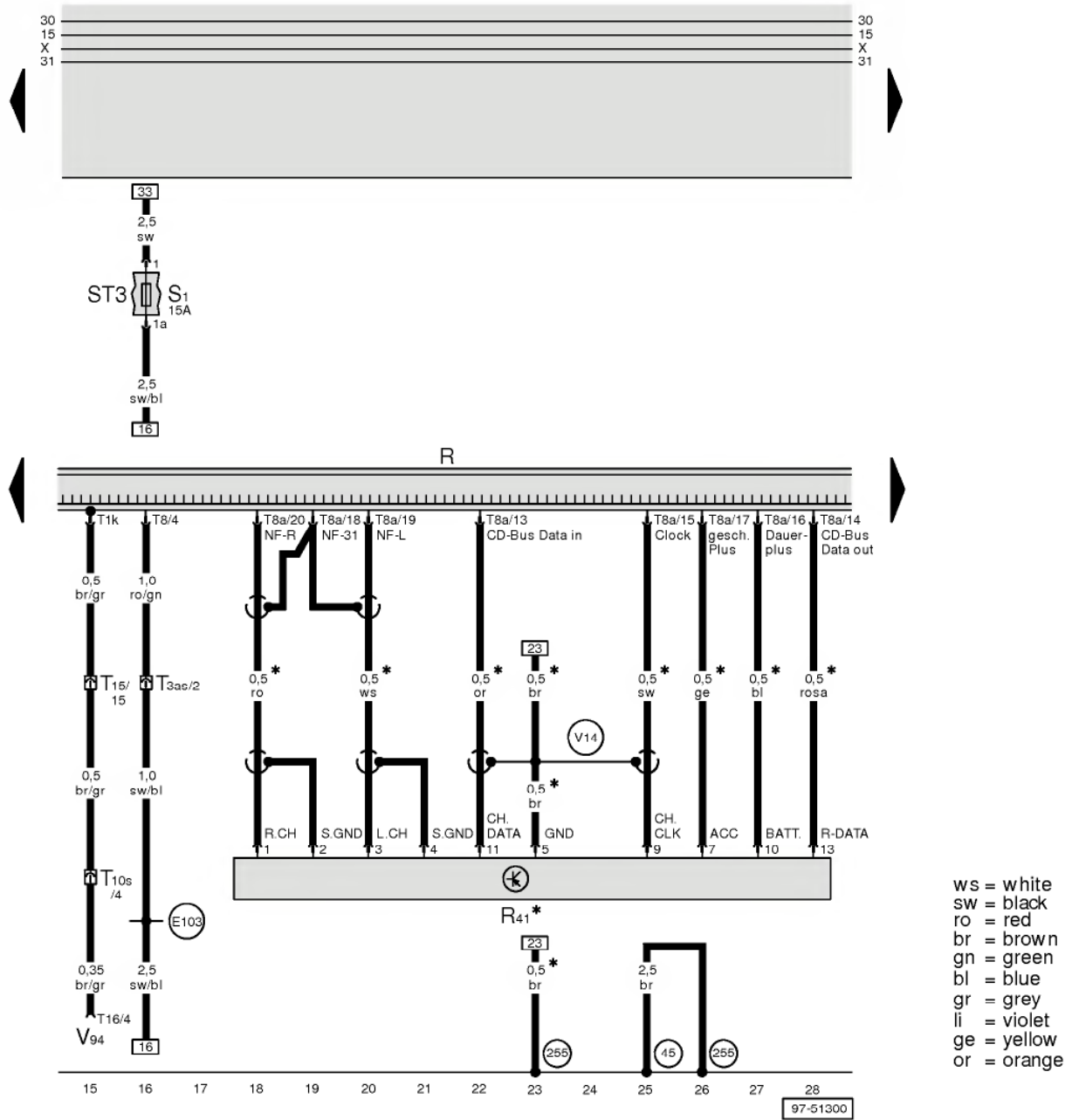
- 1 -Terminal 30 (B+) Wire Connector, TV2
- 6 -Radio Fuse, S92



ws = white
 sw = black
 ro = red
 br = brown
 gn = green
 bl = blue
 gr = grey
 li = violet
 ge = yellow

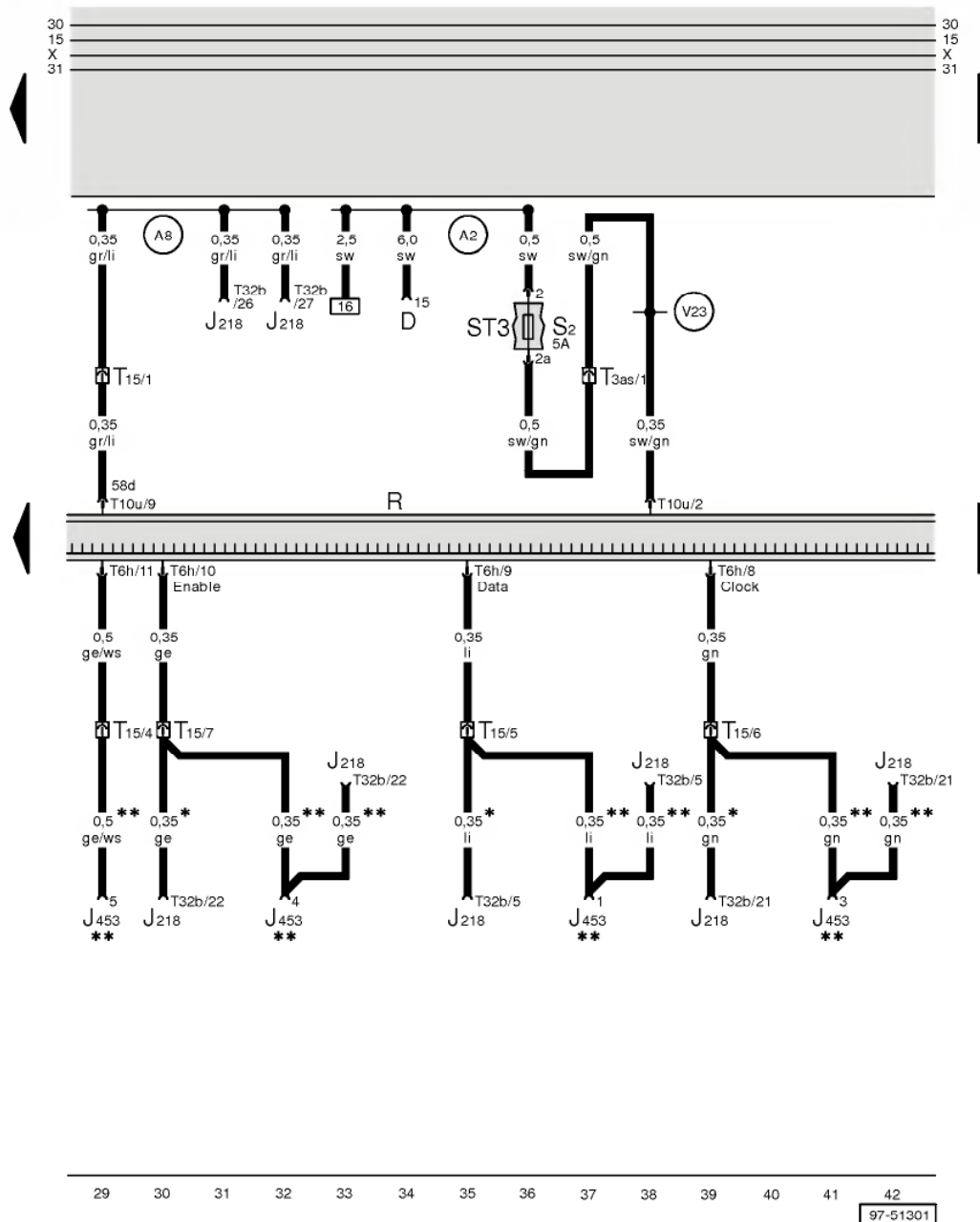
- A - Battery
- J218 - Instrument Cluster Combination Processor
- K - Data Link Connector (DLC) Rapid Data Transfer
- R - Radio
- S92 - Radio Fuse
- T8 - 8-Pin Connector, black, connector radio III
- T15 - 15-Pin Connector, brown, in console
- T16a - 16-Pin Connector, black, Data Link Connector (DLC), under steering column, left
- T32b - 32-Pin Connector, gray, on instrument cluster
- TV2 - Terminal 30 (B+) Wire Connector

- (255) - Ground connection, -1-, in wiring harness Radio
- (A19) - Wire connection (58s), in instrument panel wiring harness
- (A27) - Wire connection (vehicle speed signal), in instrument panel wiring harness
- (A76) - Connector (K-diagnosis wire), in instrument panel wiring harness
- (V1) - Plus connection (30), in rear speaker wiring harness
- (V26) - Plus connector (speed signal), in wiring harness navigation
- (V40) - Connector (K-diagnosis wire), in wiring harness communication



- R - Radio
- R41 - CD Changer Unit
- S1 - Fuse
- T1k - Single Connector, brown, on radio
- T3as - 3-Pin Connector, black, in console
- T8 - 8-Pin Connector, black, connector radio III
- T8a - 8-Pin Connector, blue, connector radio I-3
- T10s - 10-Pin Connector, black, connector station wheel house right
- T15 - 15-Pin Connector, brown, in console
- T16 - 16-Pin Connector, connector C on V94
- V94 - Central Locking/Alarm System/Interior Light Delay Control Module

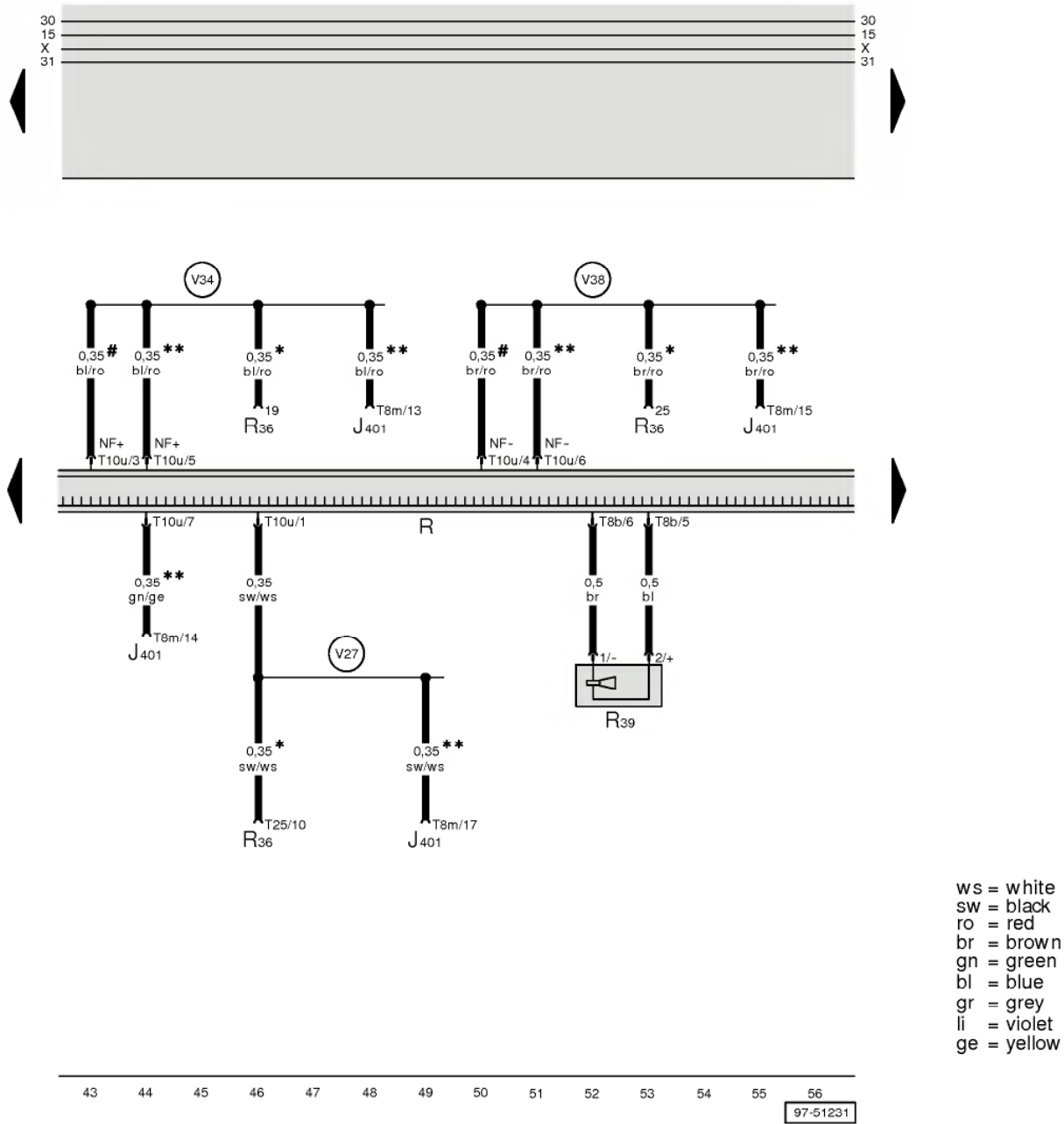
- (45) - Ground connection, behind instrument panel, center
- (255) - Ground connection, -, in wiring harness Radio
- (E103) - Connector (15a), in instrument panel wiring harness right
- (V14) - Wire connection (shielding), in CD-changer wiring harness
- * - Vehicles with CD Changer



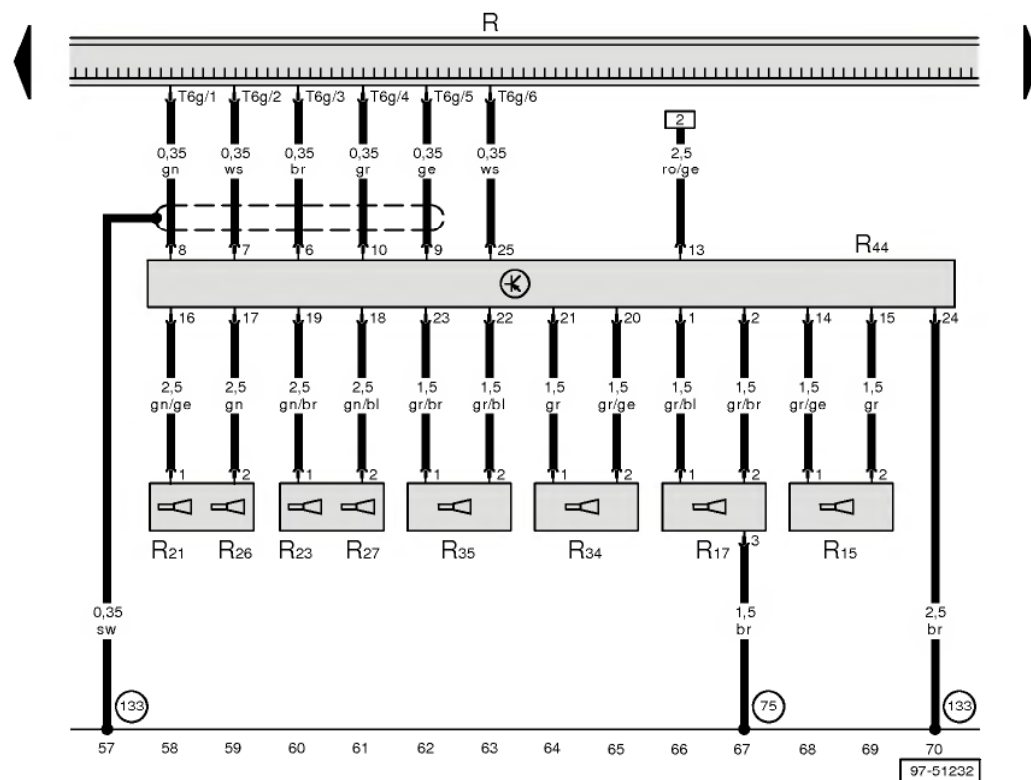
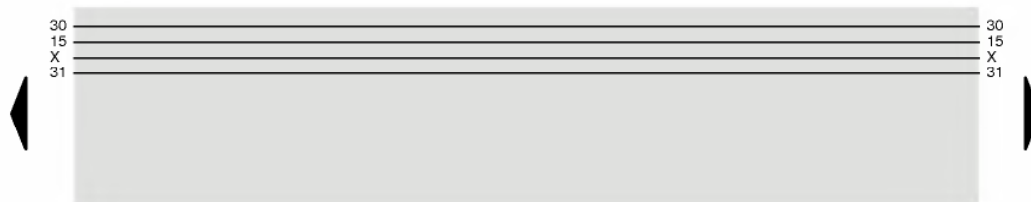
ws = white
sw = black
ro = red
br = brown
gn = green
bl = blue
gr = grey
li = violet
ge = yellow

- D - Ignition/Starter Switch
- J218 - Instrument Cluster Combination Processor
- J453 - Control module for multi-function steering wheel
- R - Radio
- S2 - Fuse
- T3as - 3-Pin Connector, black, in console
- T10u - 10-Pin Connector, red, connector radio IV
- T15 - 15-Pin Connector, brown, in console
- T32b - 32-Pin Connector, gray, on instrument cluster

- (A2) - Plus connection (15), in instrument panel wiring harness
- (A8) - Plus connection (58d), in instrument panel wiring harness
- (V23) - Plus connector (15a), in wiring harness navigation
- * - Vehicles without multi-function steering wheel
- ** - Vehicles with multi-function steering wheel



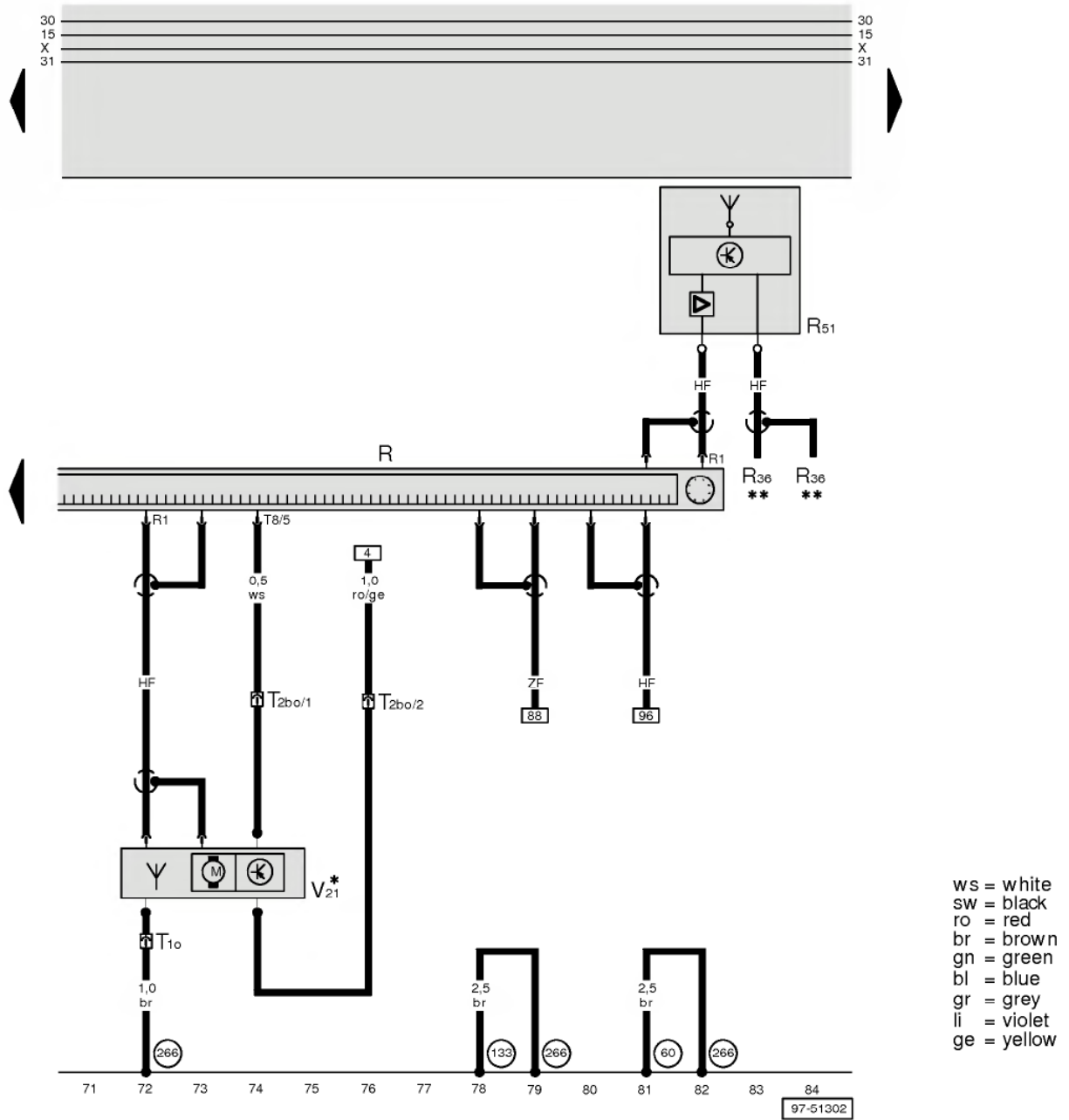
- J401 - Control module for navigation with CD-mechanism
- R - Radio
- R36 - Telephone Transceiver
- R39 - Speaker (telephone, navigation)
- T8b - 8-Pin Connector, brown, connector radio II
- T8m - 8-Pin Connector, blue, on control module for navigation
- T10u - 10-Pin Connector, red, connector radio IV
- T25 - 25-Pin Connector, on R 36, in luggage compartment, left
- V27 - Plus connector (muting), in wiring harness navigation
- V34 - Connector (mute button), in wiring harness telephone
- V38 - Connection (muting) (telephone/DSP wiring harness)
- * - Vehicles with telephone
- ** - Vehicles with navigation NS-Low
- # - Vehicles without navigation



ws = white
 sw = black
 ro = red
 br = brown
 gn = green
 bl = blue
 gr = grey
 li = violet
 ge = yellow

- R - Radio
- R15 - Left Rear Woofer
- R17 - Right Rear Woofer
- R21 - Left Front Woofer
- R23 - Right Front Woofer
- R26 - Left Front Midrange Speaker
- R27 - Right Front Midrange Speaker
- R34 - Left Rear Midrange Speaker
- R35 - Right Rear Midrange Speaker
- R44 - Left Rear Woofer/Amplifier
- T6g - 6-Pin Connector, yellow, connector radio I - 1

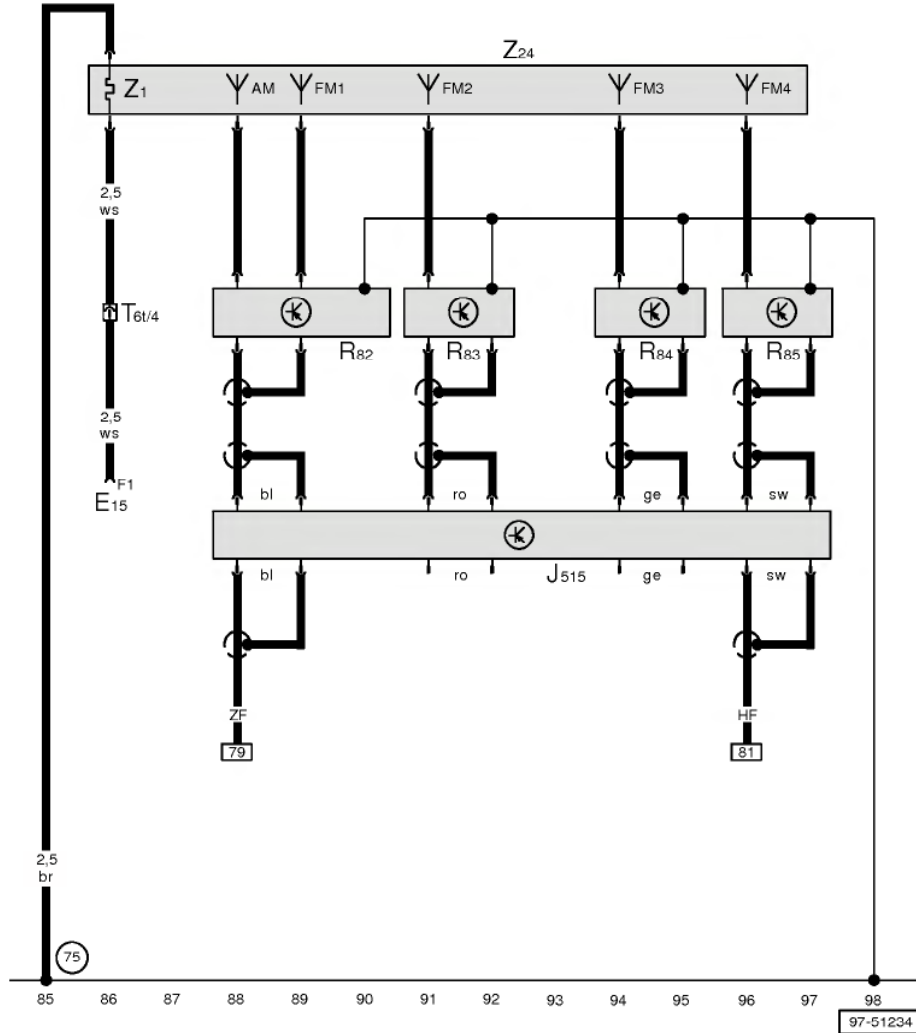
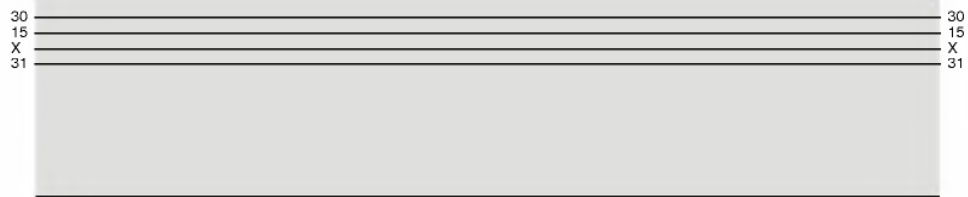
- (75) - Ground connection, on right rear pillar
- (133) - Ground connection, in speaker wiring harness



ws = white
 sw = black
 ro = red
 br = brown
 gn = green
 bl = blue
 gr = grey
 li = violet
 ge = yellow

- R - Radio
- R1 - Antenna Connection
- R36 - Telephone Transceiver
- R51 - Radio/Telephone Antenna
- T10 - Single Connector, for motor antenna
- T2bo - Double Connector, for motor antenna
- T8 - 8-Pin Connector, black, connector radio III
- V21 - Power Antenna

- (60) - Ground connection, near taillight, right
- (133) - Ground connection, in speaker wiring harness
- (266) - Ground connection, in wiring harness navigation
- * - Vehicles with power antenna
- ** - Vehicles with telephone



- ws = white
- sw = black
- ro = red
- br = brown
- gn = green
- bl = blue
- gr = grey
- li = violet
- ge = yellow

- E15 - Rear Window Defogger Switch
- J515 - Control unit for aerial selection (aerial diversity function)
- R82 - TV Antenna Amplifier 1
- R83 - TV Antenna Amplifier 2
- R84 - TV Antenna Amplifier 3
- R85 - TV Antenna Amplifier 4
- T6t - 6-Pin Connector, red, connector station wheel house right
- Z1 - Rear Window Defogger/Heat Element
- Z24 - Rear Window Defogger With Window Antenna

(75) - Ground connection, on right rear pillar