



## Supplement

Operating instructions – Bluetooth® adapter for  
Audi music interface

### **Accessories**

This supplement contains operating information for the  
**Bluetooth® adapter.**

# Contents

<b>Introduction</b> .....	3
Description .....	3
Scope of delivery .....	3
<b>Commissioning</b> .....	4
Checking the hardware and software status of the MMI .....	4
Updating the Audi music interface software .....	4
Connecting the Bluetooth® adapter .....	4
<b>Operation</b> .....	5
Controlling the connected end device via the MMI .....	5
Further settings .....	6
Bluetooth® adapter software update .....	6
<b>FCC Statement</b> .....	6

## Introduction

### Description

With the Bluetooth® adapter for the Audi music interface, different A2DP-compatible end devices such as mobile phones or MP3 players can be connected to the MMI (Multi Media Interface) via Bluetooth®. Current information on suitable A2DP-compatible end devices is available on the Internet at [www.audi.de](http://www.audi.de) or from any Audi dealer.

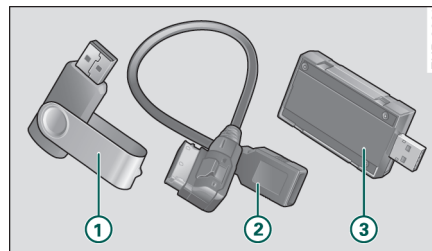
These supplementary instructions contain important information and instructions for using the Bluetooth® adapter (referred to henceforth as adapter). Ensure that these supplementary instructions are kept in the vehicle at all times. This is particularly important if you lend or sell your vehicle.



#### WARNING

- **Driving on roads today requires your full attention at all times. As a driver, you have full responsibility for safety on the road. Only operate the MMI system when the traffic situation permits it and in such a way that you retain full control of your vehicle at all times - Risk of accident!**
- **The volume settings for the audio systems should be selected so that external acoustic signals such as police and fire engine sirens can be heard clearly at all times – Risk of accident! ■**

### Scope of delivery



**Fig. 1 Bluetooth Adapter scope of delivery**

- ① USB stick with software update for the Audi music interface
- ② USB stick with adapter cable for the Audi music interface
- ③ Bluetooth® adapter



#### Note

- Before using the Bluetooth® adapter for the first time, check that the scope of delivery is complete and that the device is in working order.
- Check whether a more recent software version for the Audi music interface software update is available to download on the Internet at [www.audi.de](http://www.audi.de). If necessary, replace the software update on the USB stick with the more recent version. ■

## Commissioning

### Checking the hardware and software status of the MMI



Fig. 2 Hardware and software status

- Select: Function key **[SETUP]** > Control key **Settings** > **Version**.

The first four digits ① are relevant when checking (in the Fig. e.g. 46.3.0).

The MMI must be equipped with at least software version 42.2.0 (for USA vehicles and all Audi A4/A5 from MY 2008 with a software version 41.4.0). With lower software versions, the update for the Audi music interface is not carried out. If your MMI displays a lower software version, please contact your Audi dealer.



#### Note

The hardware and software status is checked when the Bluetooth® adapter is commissioned for the first time. ■

### Updating the Audi music interface software

For the Bluetooth® adapter to be recognized by the Audi music interface, a software update is required.

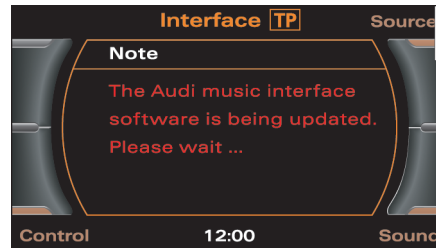


Fig. 3 Carry out a software update

- Connect the supplied USB adapter cable to the Audi music interface.
- Connect the USB stick. The update is started. Follow the instructions on the MMI display.



#### Note

- Do not disconnect the USB stick during the update process.
- The software update is only carried out when the Bluetooth® adapter is commissioned for the first time or when a more recent programme version is used. ■

### Connecting the Bluetooth® adapter

- Press the function key **[MEDIA]**.
- Connect the supplied USB adapter cable to the Audi music interface.
- Connect the Bluetooth® adapter. ▶

After connecting the Bluetooth® adapter to the Audi music interface, the blue LED in the adapter flashes with a low frequency during the search for Bluetooth® devices. Before music can be played, your A2DP-compatible end device must be connected to the adapter via the Bluetooth® connection. Consult the operating instructions for your A2DP-compatible end device to find out how to carry out the connecting process (mobile phone or MP3 player). Connection must take place in accordance with the instructions provided in this document and the operating status of the end device to be connected. The access code, passkey or PIN is "1234". Following connection and a short initialization phase, the A2DP central menu appears with the name of the end device in the title line of the MMI display. If the Bluetooth® connection has been made correctly, the blue LED lights up constantly in the Bluetooth® adapter.



### Note

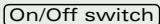
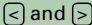
- If several A2DP-compatible end devices are located in the vehicle, the Bluetooth® adapter connects with the end device which was most recently connected. If necessary, confirm the connection to the end device.
- The Bluetooth® adapter puts the end device in Play mode and the end device starts to play automatically. While the track is playing, the blue LED in the adapter flashes with a high frequency. While an A2DP-compatible end device is connected to the Bluetooth® adapter, the adapter is hidden from other Bluetooth® devices.
- If the track is only played on the connected end device, the track can be transferred manually to the MMI by selecting **Forced Audio Connect** ⇒ *page 5*.
- When using further functions of the connected A2DP-compatible end device, e.g. when transmitting large data quantities to another Bluetooth-enabled end device, the audio transmission may be impaired. If this happens, stop the transmission! ■

## Operation

### Controlling the connected end device via the MMI

All functions of the Bluetooth® adapter can be accessed via the intuitive and standardized operating concept of the MMI terminal ⇒ "Infotainment/MMI, Operating instructions", section "General operation".

#### Function overview:

<b>Current Track</b>	The current track is played.
<b>Next Track</b>	The next track is played.
<b>Previous Track</b>	The previous track is played.
<b>Manual</b>	Functions selected via the control wheel (e.g. Fast-forward/Rewind).
	Stop track (Pause).
	Fast-forward and Rewind the track by pressing the arrow keys on the MMI terminal.



### Note

The manual control functions **MIX** (Track mix) and **SCAN** (Play intro) are not supported by the Bluetooth® adapter. ■

## Further settings

*Devices connected to the Bluetooth® adapter can be displayed, connected and disconnected.*

- Via the control button in the A2DP central menu of the MMI display, select the Bluetooth® directory.

**The following functions and submenus are available in the Bluetooth® directory:**

<b>Bluetooth-Devices</b>	All devices connected to the Bluetooth® adapter are shown.
<b>Connect Device</b>	Establish connection with the A2DP-compatible end device in accordance with the saved priority list.
<b>Disconnect Device</b>	Disconnect a connected A2DP-compatible end device.
<b>Delete All Devices</b>	Delete all A2DP-compatible end devices from the Bluetooth® device list.
<b>Forced Audio Connect</b>	Play track manually via the MMI ■

## Bluetooth® adapter software update

A software update is available with every standard PC with USB interface to improve compatibility with new Bluetooth® devices or to expand the functional scope of the Bluetooth® adapter.

Audi will be happy to answer and questions you my have. ■

## FCC Statement

This device complies with part 15 of the FCC Rules. Operation is subject to the following two conditions: (1) The device may not cause harmful interference, and (2) this device must accept any interference received, including interference that may cause undesired operation. ■

© 2008 AUDI AG

It is prohibited to reprint, reproduce or translate this document, in part or in full, without the written permission of AUDI AG. All rights, including all copyright laws, reserved by AUDI AG. We reserve the right to make changes. Made in Germany.

Only valid in conjunction with the original operating instructions.

**Editorial deadline 28.01.2008**



**For the sake of the environment**

This paper was made from chlorine-free, bleached pulp.

**Supplement**  
**Bluetooth® adapter for Audi music interface**  
**englisch 05.2008**