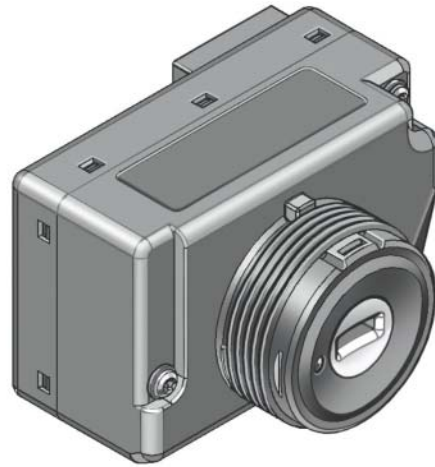


Entry and start authorisation switch -E415

The Audi A8 '03 does not feature a conventional ignition/starter switch. The entry and start authorisation switch does not evaluate the mechanical encoding of the key. An integral feature of the key is the reader coil which transmits the transponder data of the ignition key in encoded form via a bidirectional data wire to the entry and start authorisation control unit.

The entry and start authorisation switch does not have to be matched to the immobilizer system.



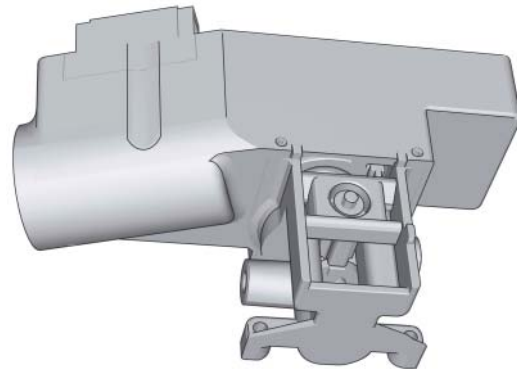
294_015



Steering column lock control element -N360

The steering column lock control element - N360 is actuated by the entry and start authorisation control unit. It locks and releases the steering column. Encoded data transfer between -J518 and -N360 only takes place at term. 15.

The steering column lock control element forms part of the immobilizer and has to be adapted to the system following replacement.



294_016

Other components

None of the other electronic components, such as door handles, aerals and start/stop buttons feature microcontroller actuation and they are not integrated into the "Immobilizer" and "Component protection" security systems.