

Transmission, disassembling and assembling

Assembly sequence ⇒ [Page 34-54](#) .

1 - Bearing housing, Torsen differential and end cover

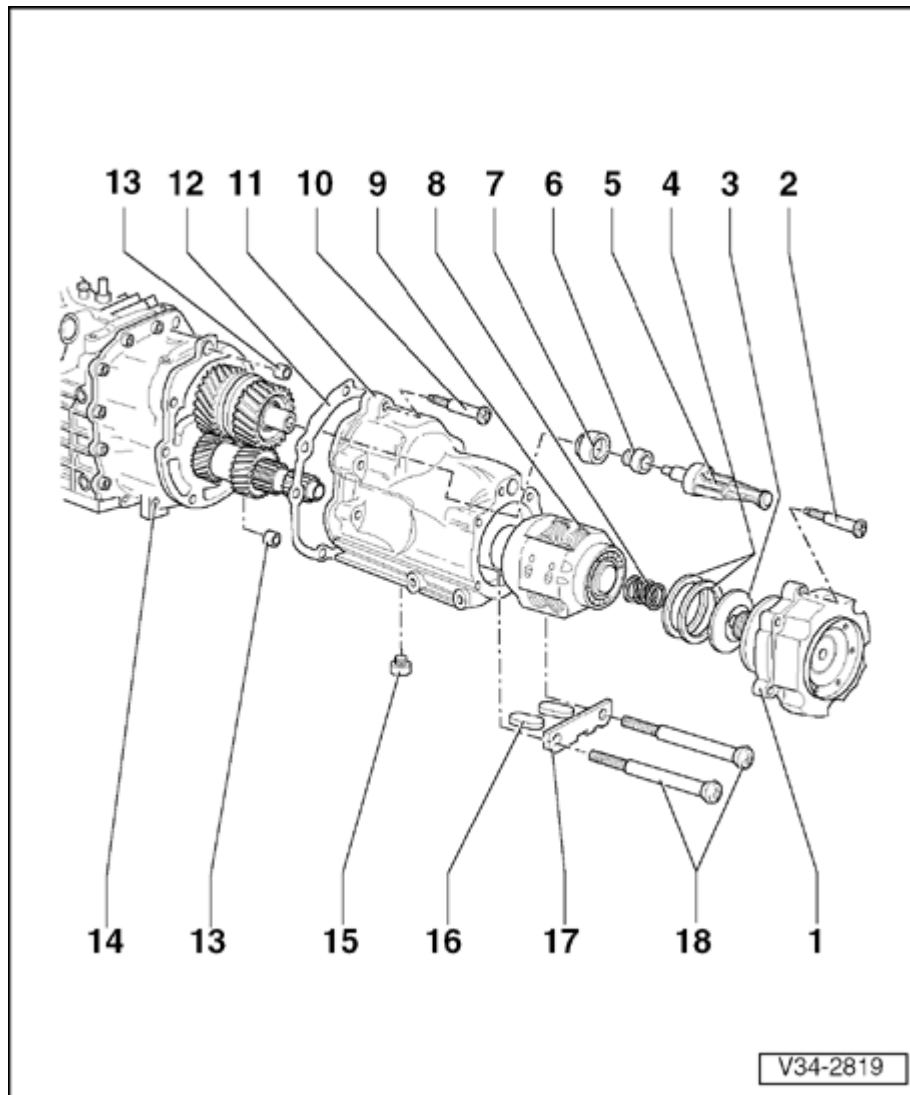
◆ Removing and installing ⇒ [Page 34-41](#)

2 - Gear cluster and selector shaft

◆ Removing and installing ⇒ [Page 34-44](#)

3 - Differential

◆ Removing and installing ⇒ [Page 39-15](#)



Bearing housing, Torsen differential and end cover, removing and installing

1 - Bearing housing

- ◆ Disassembling and assembling ⇒ [Page 34-89](#)

2 - Bolt, 25 Nm

- ◆ Qty. 6

3 - Dished spring

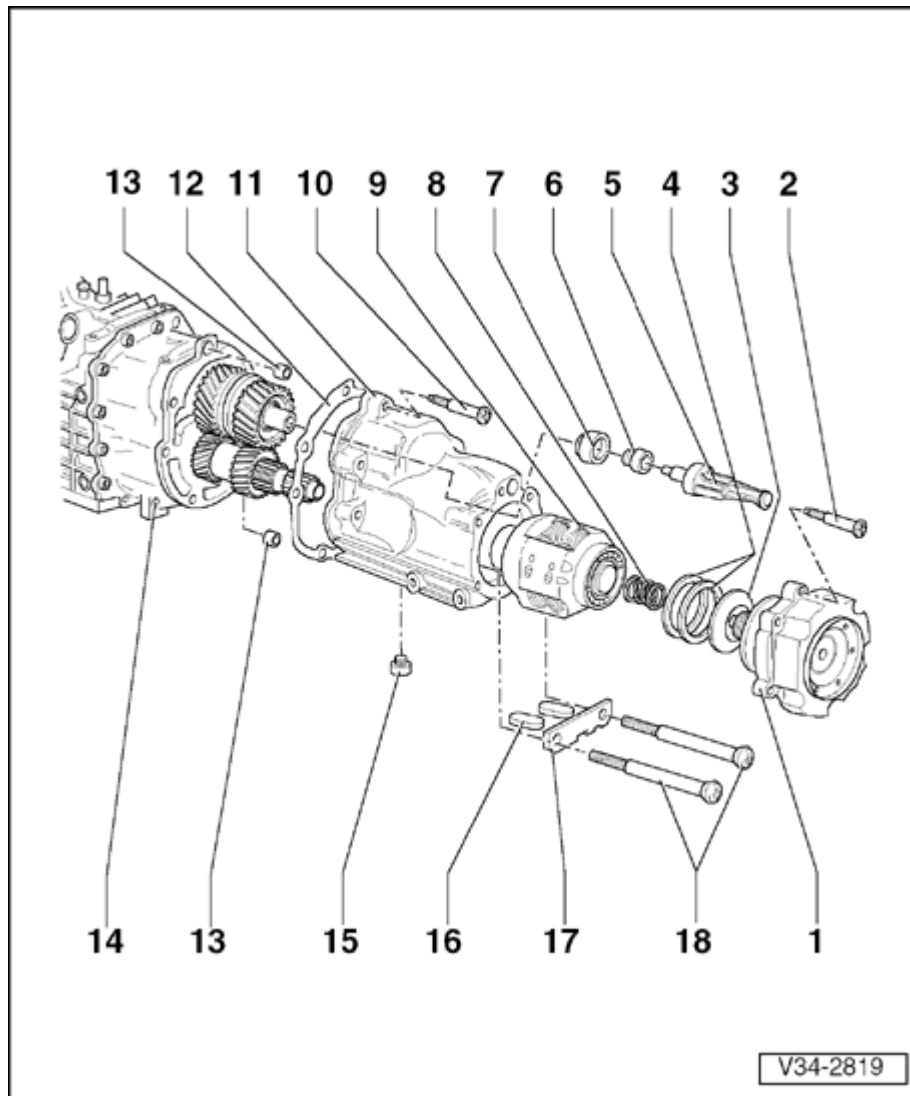
- ◆ Installation position: larger diameter (concave side) faces shims

4 - Shim

- ◆ Qty. 2 or 3
- ◆ Re-determining shims ⇒ [Page 34-85](#)

5 - Oil collector

- ◆ Disassembling and assembling ⇒ [Page 34-83](#)
- ◆ Removing ⇒ [Page 34-58](#)
- ◆ Installing ⇒ [Page 34-84](#)



6 - Multi-point socket head bolt, 150 Nm

- ◆ Removing ⇒ [Page 34-60](#)
- ◆ Installing ⇒ [Page 34-83](#)

7 - 2nd inner race for tapered roller bearing for input shaft

- ◆ Removing ⇒ [Page 34-61](#)
- ◆ Installing ⇒ [Page 34-82](#)

8 - Spring

9 - Torsen differential

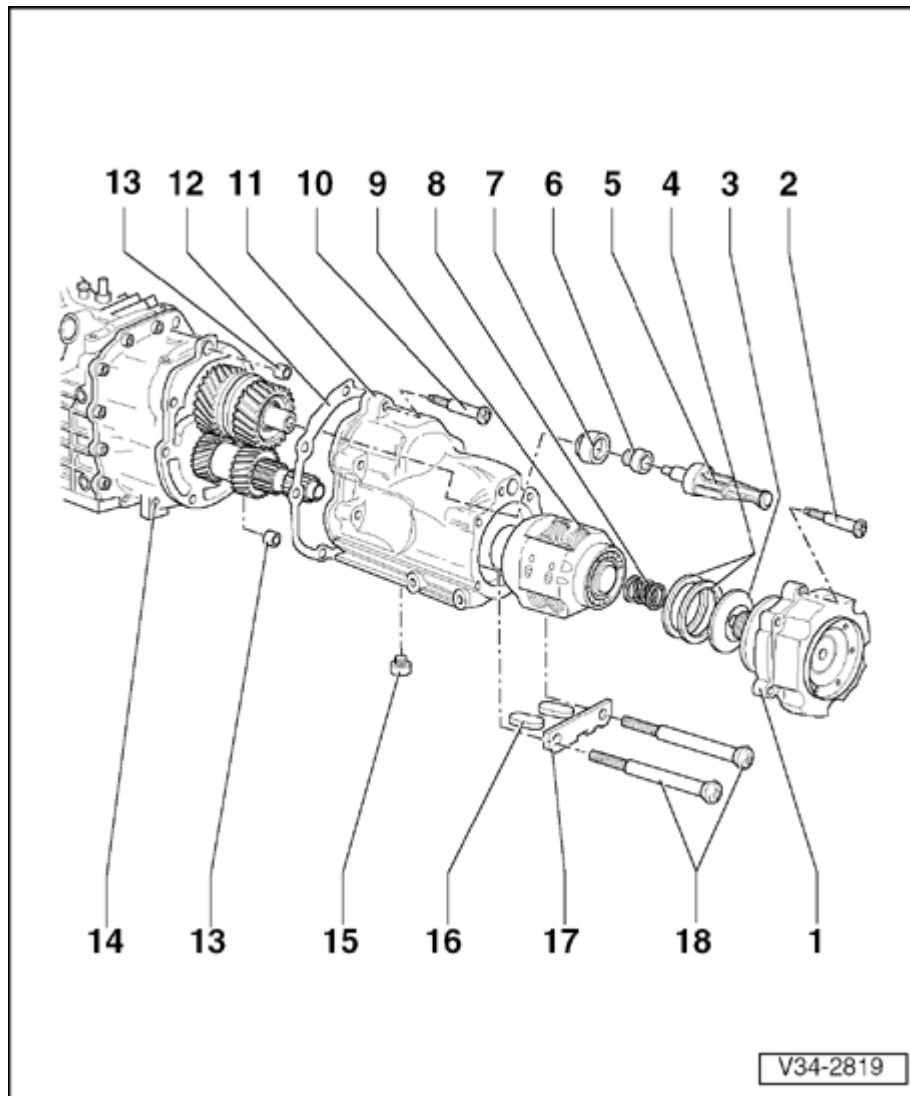
- ◆ Can be serviced only by manufacturer
- ◆ Servicing bearings for Torsen differential ⇒ [Page 34-97](#)

10 - Bolt, 25 Nm

- ◆ Qty. 5

11 - End cover

- ◆ Servicing ⇒ [Page 34-97](#)

**12 - Gasket**

- ◆ Replace

13 - Dowel sleeve

- ◆ Qty. 2

14 - Gear cluster

- ◆ Removing and installing ⇒ [Page 34-18](#)

15 - Oil drain plug - 40 Nm**16 - Magnet**

- ◆ Qty. 2

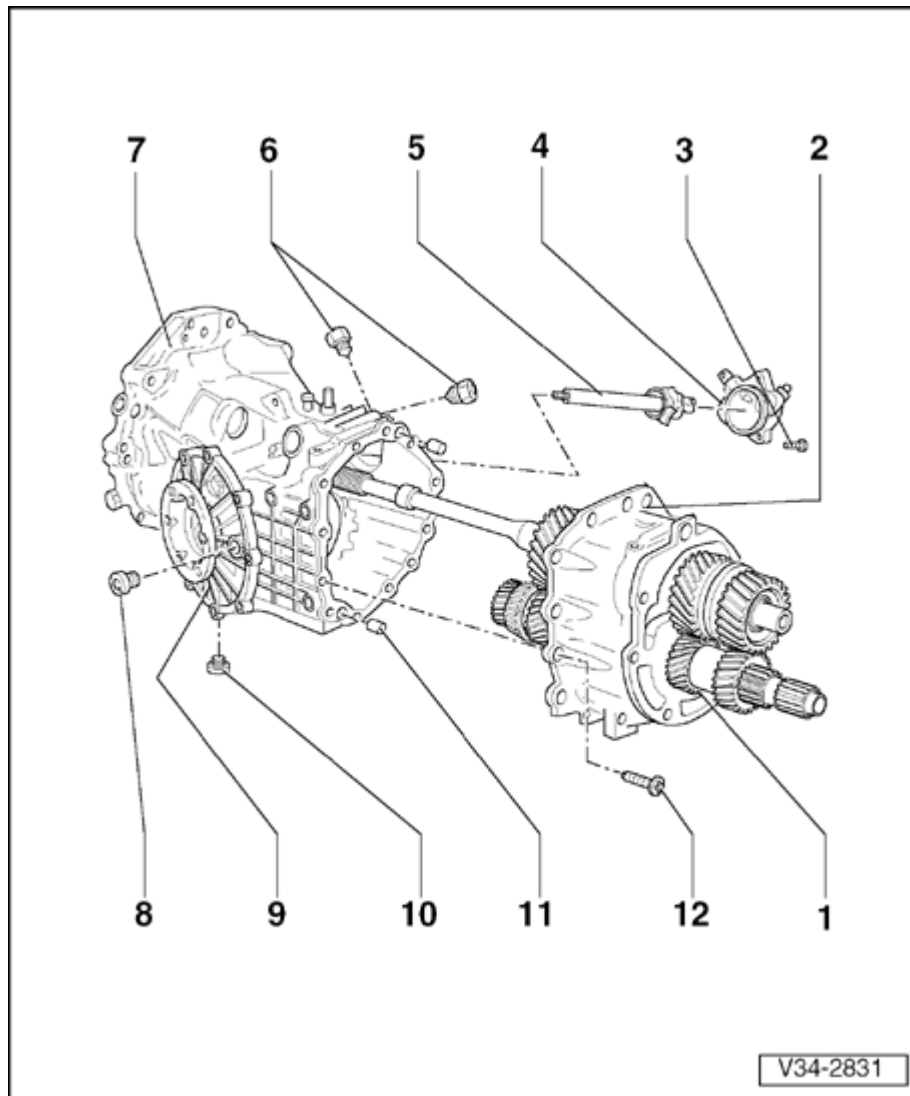
- ◆ Clean

17 - Support plate

- ◆ Installation position: lugs face magnets

18 - Bolt, 25 Nm

- ◆ Qty. 2



Gear cluster and selector shaft, removing and installing

1 - 5th and 6th gear

- ◆ Gear cluster remains flanged to transmission housing

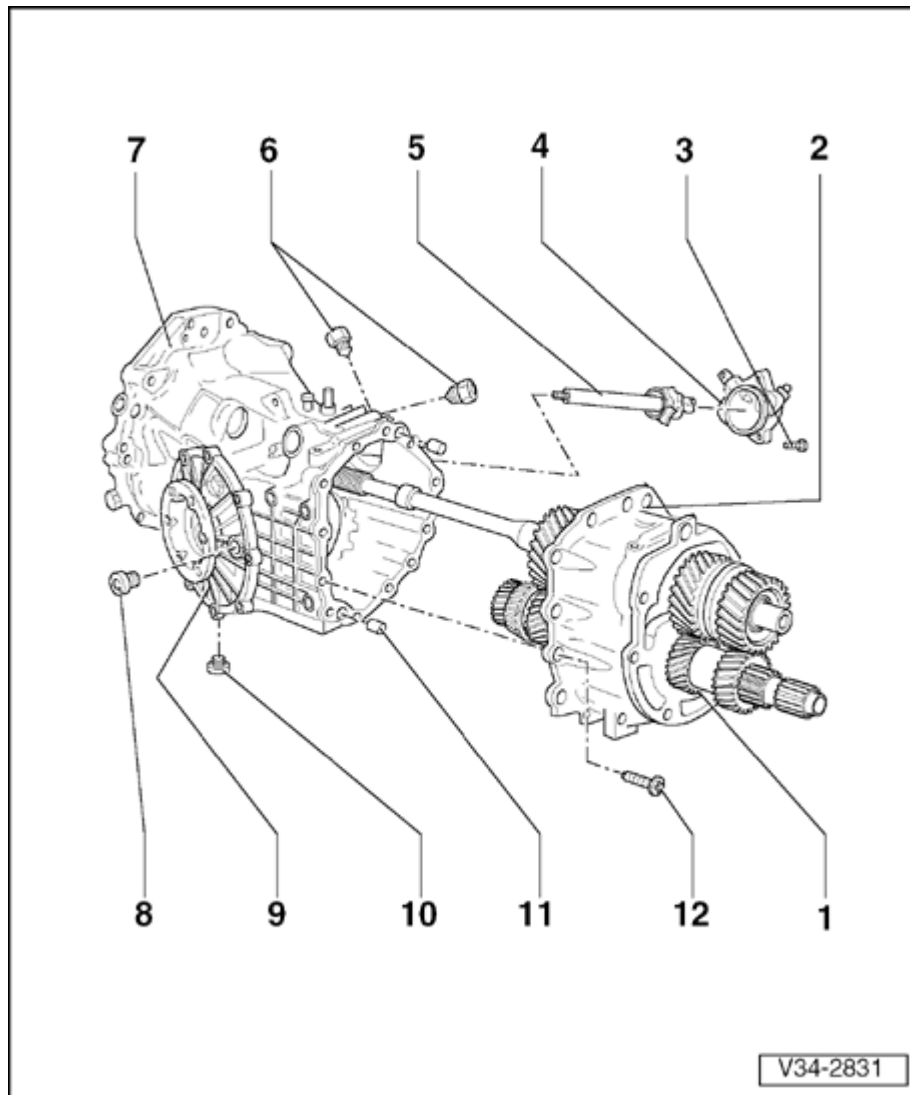
- ◆ Removing and installing ⇒ [Page 34-47](#)

2 - Bearing plate complete

- ◆ Removing and installing input shaft, drive pinion, hollow shaft and internal selector mechanism ⇒ [Page 34-51](#)

3 - Bolt - 25 Nm

- ◆ Qty. 3
- ◆ Apply sealing paste AMV 188 000 02 when installing



4 - Cover for selector shaft

- ◆ Removing ⇒ [Page 34-59](#)
- ◆ Installing ⇒ [Page 34-85](#)

5 - Selector shaft complete

- ◆ Removing ⇒ [Page 34-59](#)
- ◆ Installing ⇒ [Page 34-85](#)
- ◆ Disassembling and assembling ⇒ [Page 34-144](#)

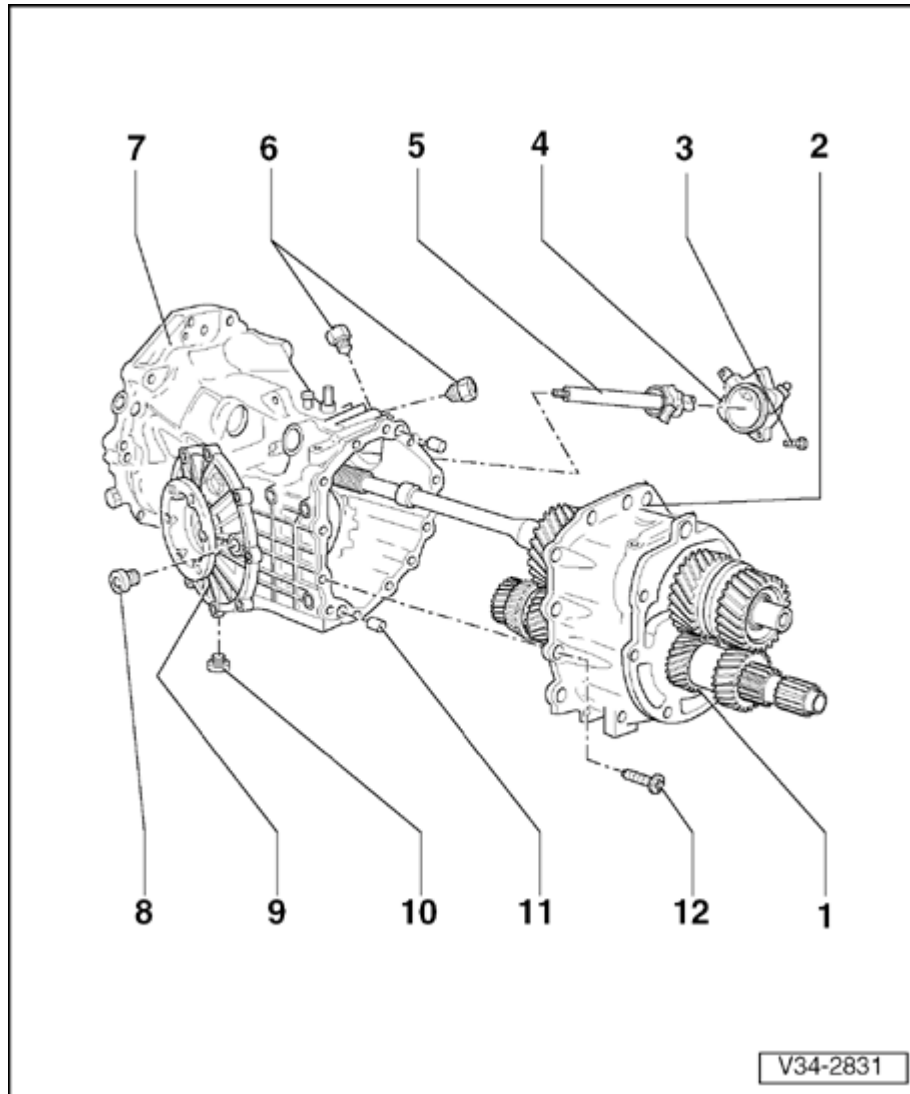
6 - Locking bolt

- ◆ For aluminium bolt: 50 Nm
- ◆ For steel bolt: 70 Nm
- ◆ Mark installation positions of aluminium bolts and steel bolts; do not interchange

7 - Transmission housing

- ◆ Servicing ⇒ [Page 34-127](#)

8 - Oil filler plug, 40 Nm

**9 - Differential**

◆ Removing and installing ⇒ [Page 39-15](#)

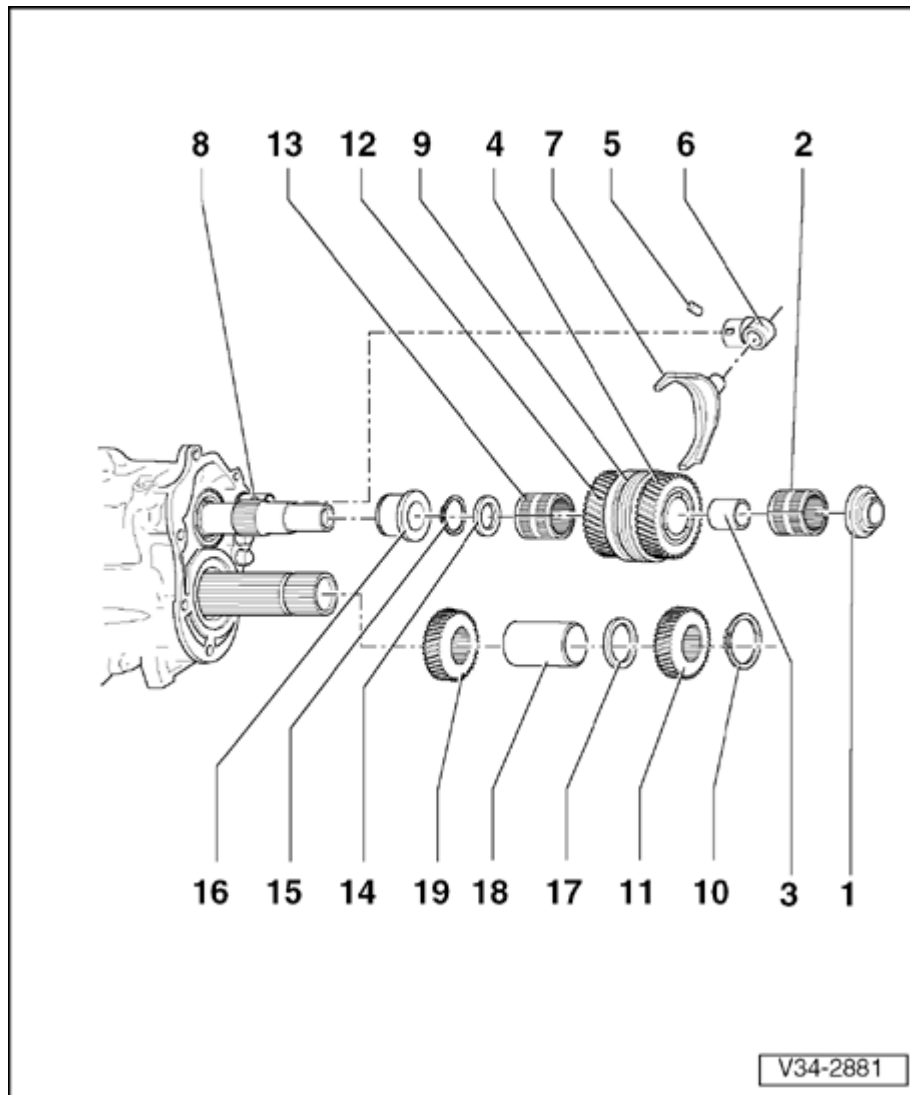
10 - Oil drain plug, 40 Nm

11 - Dowel sleeves

◆ Qty. 2

12 - Bolt, 25 Nm

◆ Qty. 12



5th and 6th gear, removing and installing

1 - 1st inner race for tapered roller bearing for input shaft

◆ Pulling off ⇒ [Page 34-61](#)

◆ Installing ⇒ [Page 34-81](#)

2 - Needle bearing for 5th gear

3 - Inner race for 5th speed sliding gear

◆ Pulling off ⇒ [Page 34-64](#)

◆ Driving on ⇒ [Page 34-81](#)

4 - 5th speed sliding gear

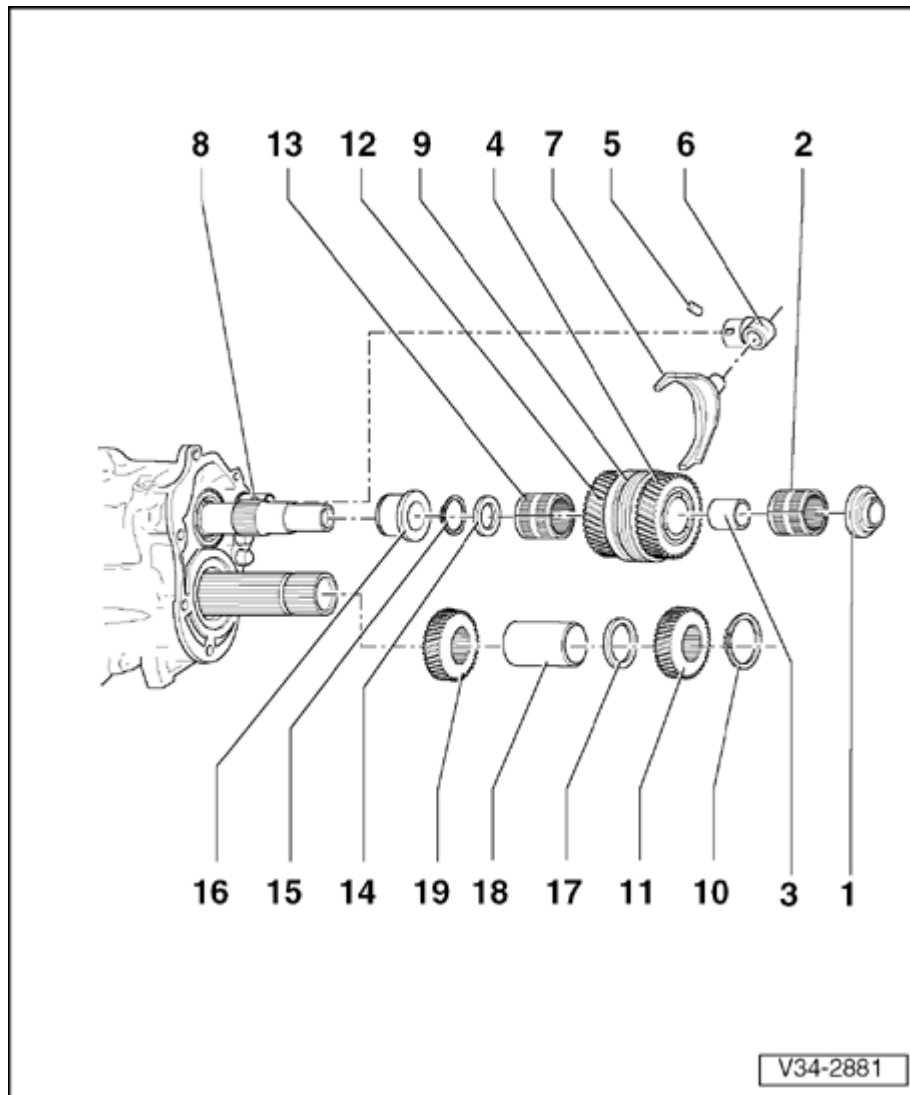
◆ Pulling off ⇒ [Page 34-61](#)

◆ Installing ⇒ [Page 34-81](#)

5 - Roll pin

◆ Pressing out ⇒ [Page 34-62](#)

◆ Pressing in ⇒ [Page 34-77](#)



6 - Follower

- ◆ Only replace complete with selector rod for 5th and 6th gear - 8 -
- ◆ Pulling off ⇒ [Page 34-63](#)
- ◆ Fitting ⇒ [Page 34-77](#)

7 - Selector fork for 5th and 6th gear

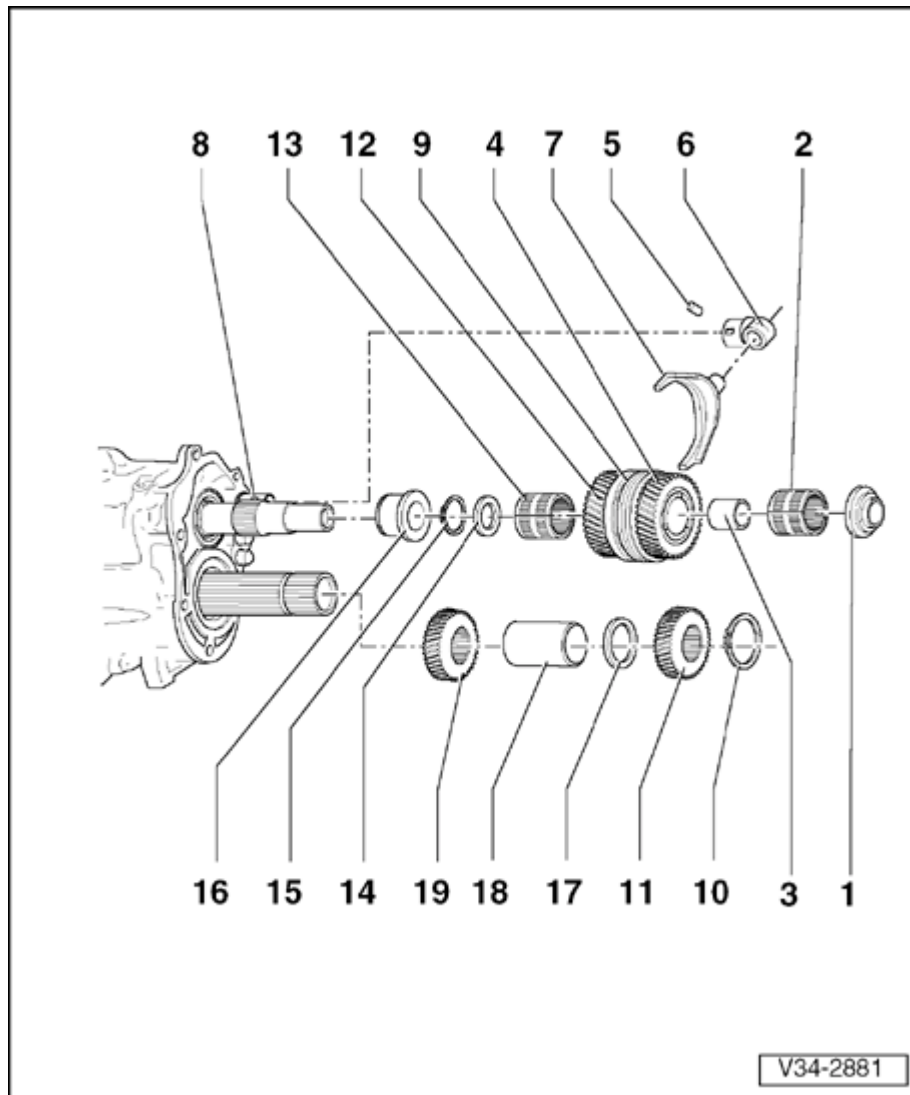
- ◆ Can be replaced individually

8 - Selector rod for 5th and 6th gear

- ◆ Only replace complete with follower - 6 -
- ◆ Removing ⇒ [Page 34-62](#)
- ◆ Installing ⇒ [Page 34-72](#)

9 - Locking collar, synchro-ring, synchro-hub for 5th and 6th gear

- ◆ Removing ⇒ [Page 34-63](#)
- ◆ Installing ⇒ [Page 34-76](#)

**10 - Circlip**

- ◆ Re-determining ⇒ [Page 34-80](#)

11 - 5th speed gear

- ◆ Pulling off ⇒ [Page 34-62](#)
- ◆ Pressing on ⇒ [Page 34-79](#)

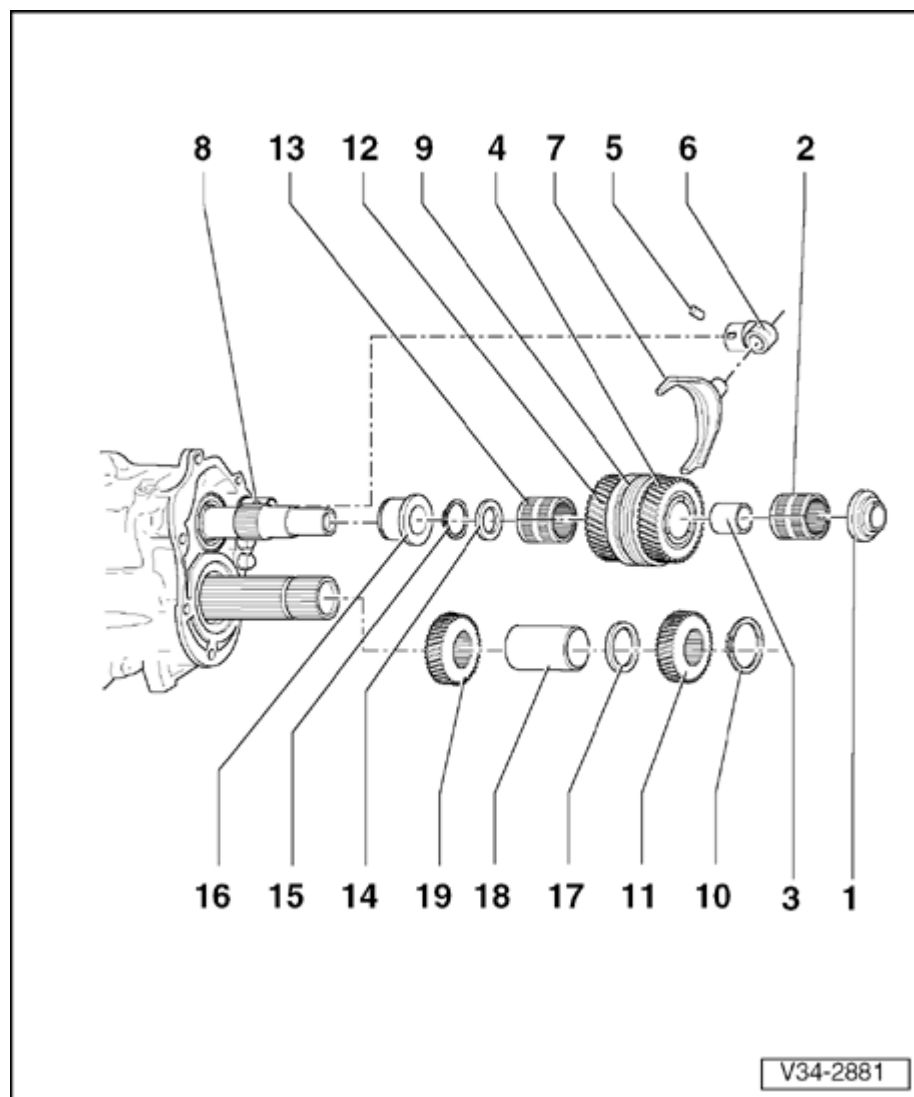
12 - 6th speed sliding gear

- ◆ Pull off together with synchro-hub and inner race for 5th gear ⇒ [Page 34-64](#)

13 - Needle bearing for 6th gear**14 - Thrust washer for needle bearing for 6th gear**

- ◆ Installation position: grooves face circlip, smooth face contact surface towards needle bearing

15 - Circlip



16 - Inner race for cylinder roller bearing

- ◆ Take off by hand ⇒ [Page 34-65](#)

17 - Shim

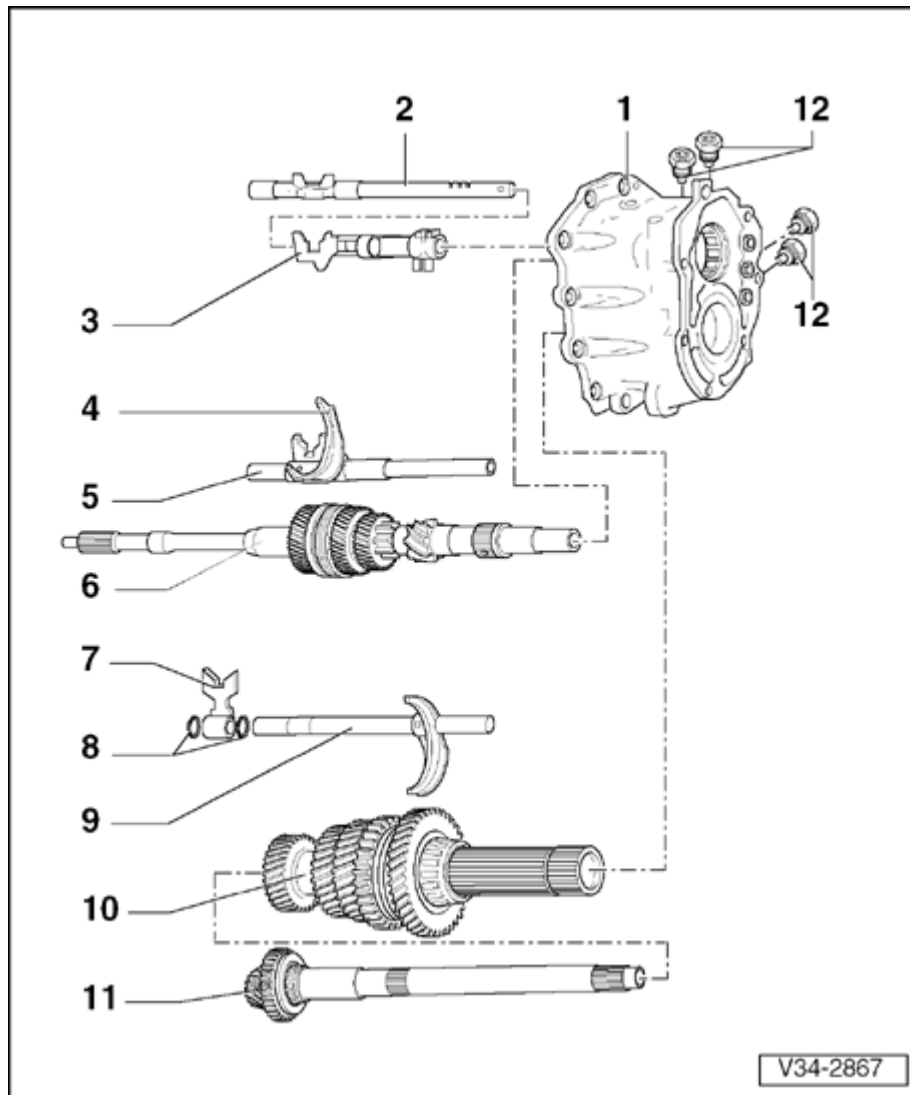
- ◆ Re-determine thickness ⇒ [Page 34-78](#)

18 - Spacer sleeve

- ◆ Length 39.6 mm

19 - 6th speed gear

- ◆ To press off, remove bearing plate ⇒ [Page 34-65](#)
- ◆ Pressing off ⇒ [Page 34-68](#)
- ◆ Pressing on ⇒ [Page 34-69](#)



Input shaft, drive pinion, hollow shaft and internal selector mechanism from bearing plate, removing and installing

1 - Bearing plate

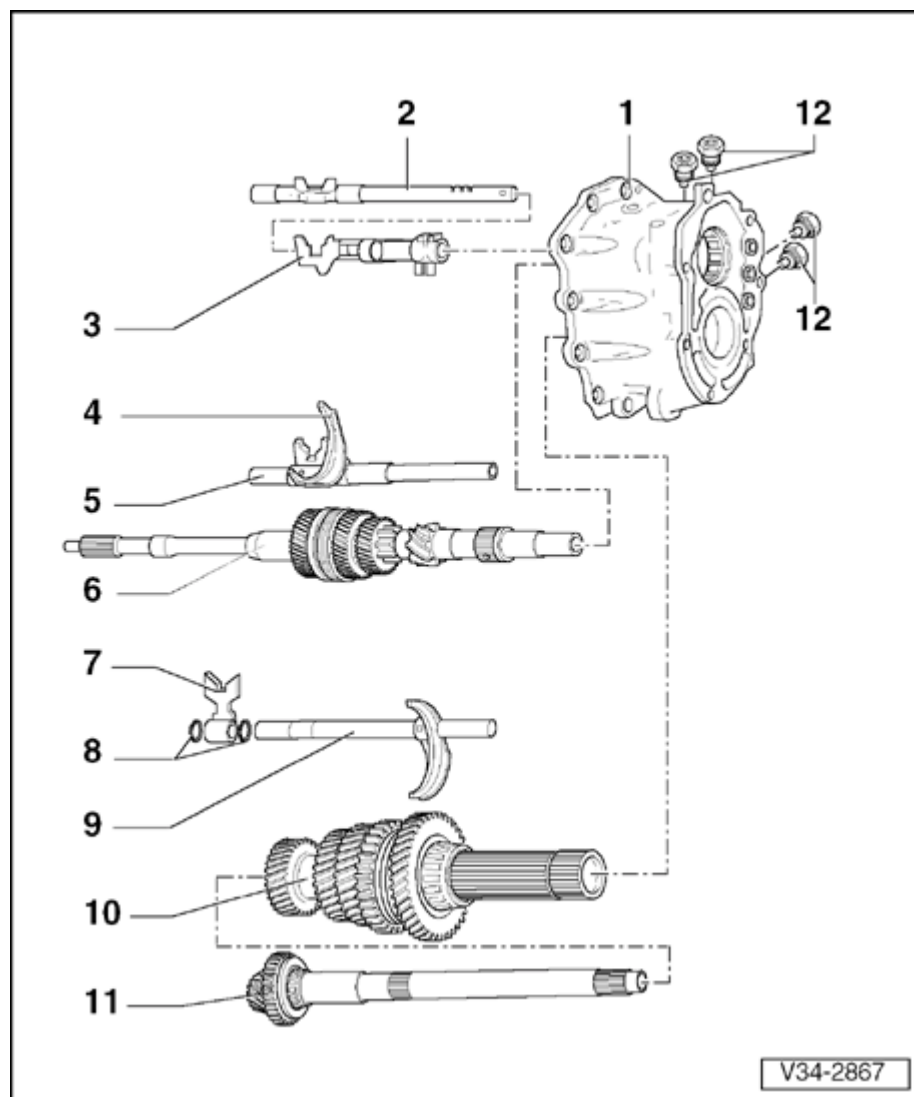
- ◆ Servicing ⇒ [Page 34-112](#)

2 - Selector rod for 5th and 6th gear

- ◆ Only replace complete with follower for 5th and 6th gear ⇒ [Page 34-48](#)

3 - Follower for reverse gear

- ◆ Pulling out ball sleeve ⇒ *Fig. 3*, Page ⇒ [Page 34-118](#)
- ◆ Driving in ball sleeve ⇒ *Fig. 4*, Page ⇒ [Page 34-119](#)



4 - Selector fork for 3rd and 4th gear

- ◆ Can be replaced individually
- ◆ Installation position: rib towards follower

5 - Selector rod for 3rd and 4th gear

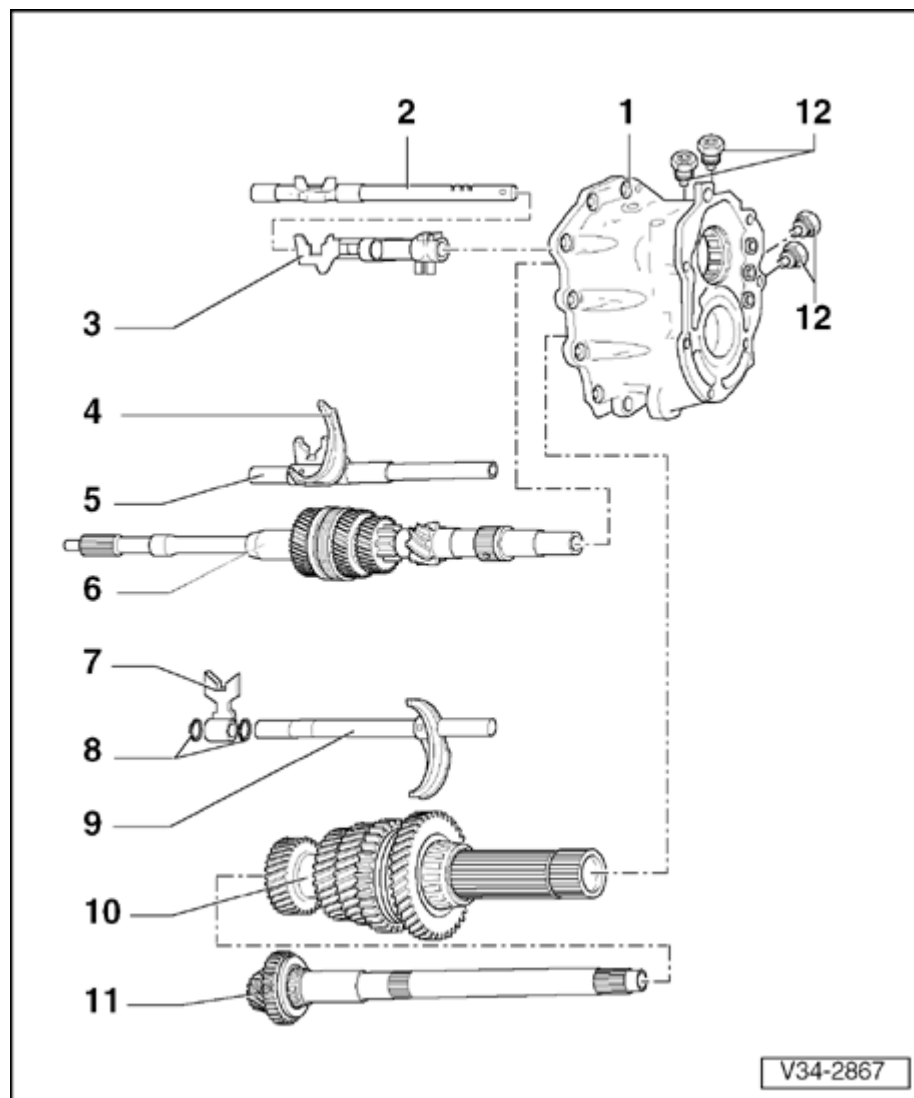
- ◆ Only replace complete with follower for 3rd and 4th gear

6 - Input shaft

- ◆ Disassembling and assembling ⇒ [Page 35-1](#)

7 - Follower for 1st and 2nd gear

- ◆ Can be replaced individually

**8 - Circlip**

- ◆ Qty. 2

9 - Selector rod for 1st and 2nd gear

- ◆ Only replace together with selector fork for 1st and 2nd gear (secured together by means of a pin)

10 - Hollow shaft

- ◆ Disassembling and assembling ⇒ [Page 35-13](#)

11 - Drive pinion

- ◆ Disassembling and assembling ⇒ [Page 35-13](#)

12 - Locking bolts

- ◆ Qty. 4
- ◆ For aluminium bolt: 50 Nm
- ◆ For steel bolt: 70 Nm
- ◆ Mark installation positions of aluminium bolts and steel bolts; do not interchange